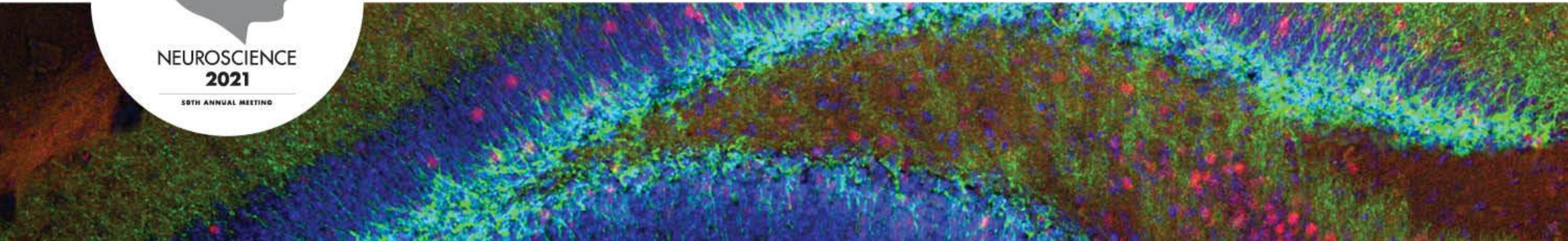


# Using the NS21 Video Chat

SfN Staff



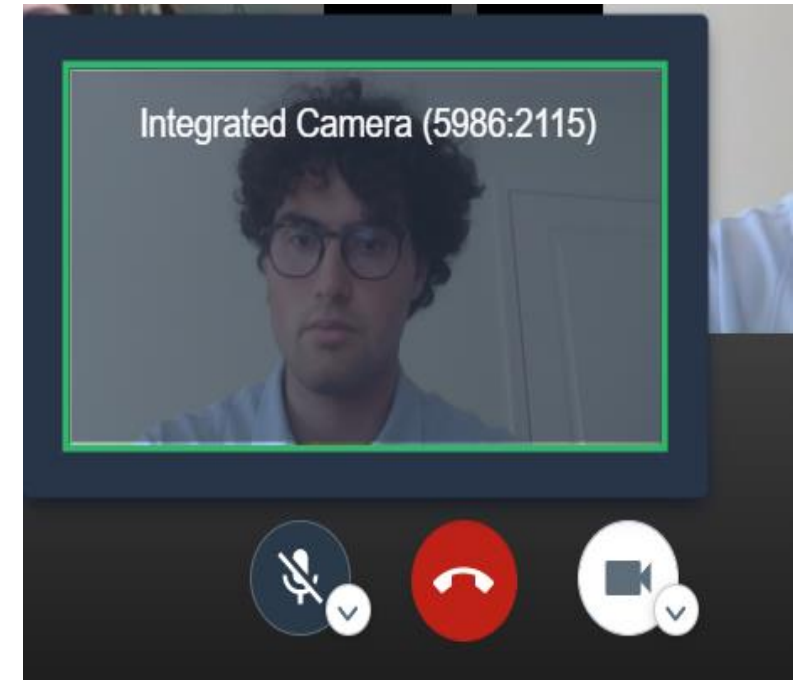
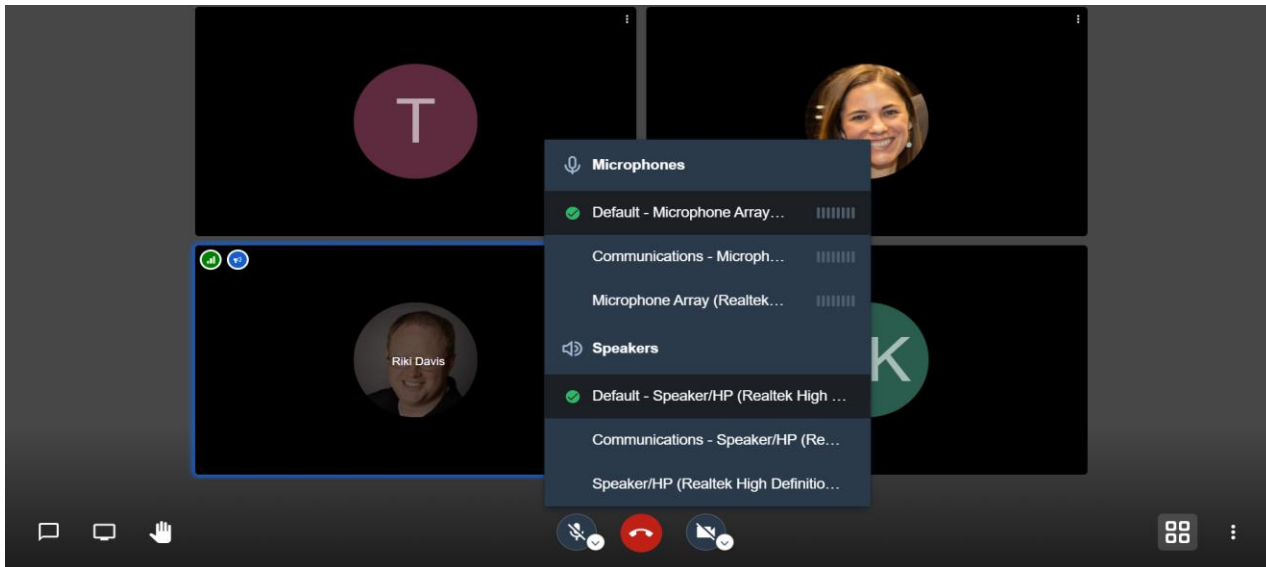
# Accessing the Video Chat

The screenshot shows the SfN Global Connectome website interface. At the top, there is a navigation bar with the event title and dates. Below this, a sidebar on the left contains a 'PLATINUM SPONSOR' section for 'emulate' and a 'Video Chat (2 representatives)' link. The main content area features a 'When you click the chat buttons below you can pick one of two ways to join the chat...' instruction. Two chat options are presented: 'Meet the Editors of JNeurosci & eNeuro' and 'Chat With SfN Staff Members'. Both options have a 'Video Chat' button. A red box highlights the 'Chat With SfN Staff Members' button, with a red arrow pointing to a 'Launch' button on a subsequent page. This second page, titled 'VIDEO CHAT OPTION #1', provides instructions on how to access the chat via a browser and includes a 'Launch' button. Below this, 'VIDEO CHAT OPTION #2' describes using the 'eventScribe Live' app, accompanied by a QR code. The footer of the page includes logos for 'FUJIFILM' and 'eventScribe Live'.

Access the video chat through the event pop-up, then through the “Launch” button on the refreshed page.

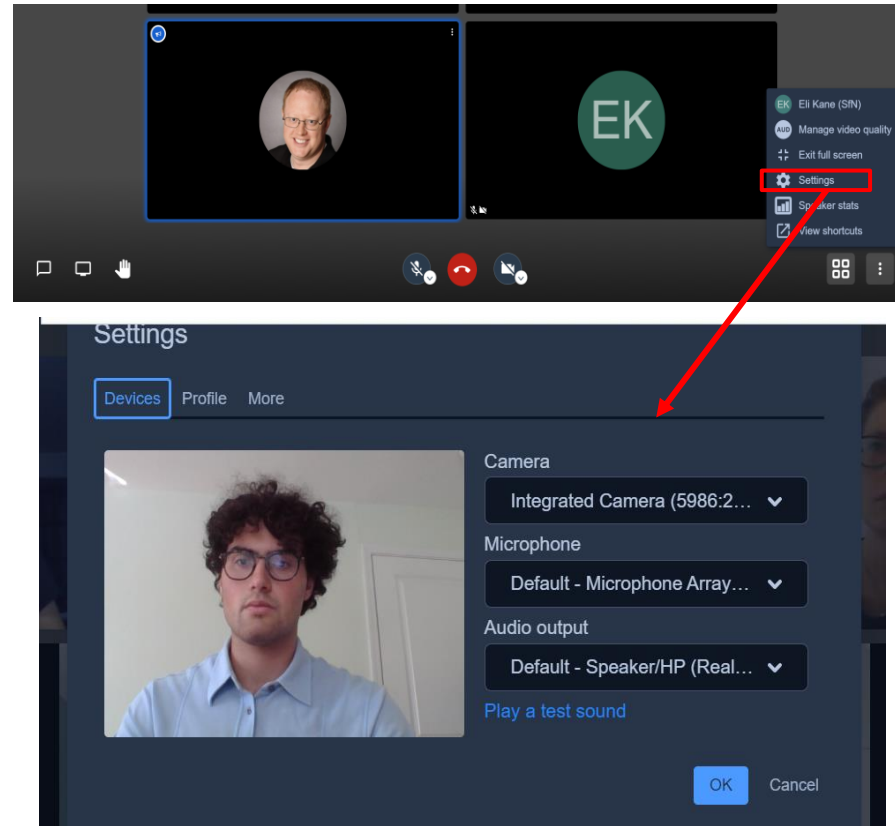
# Connect your Camera and Microphone Two Ways

First way: access your microphone options by clicking the down arrow on the microphone icon in the bottom toolbar. Access your video options by clicking the down arrow on the camera icon in the bottom toolbar.

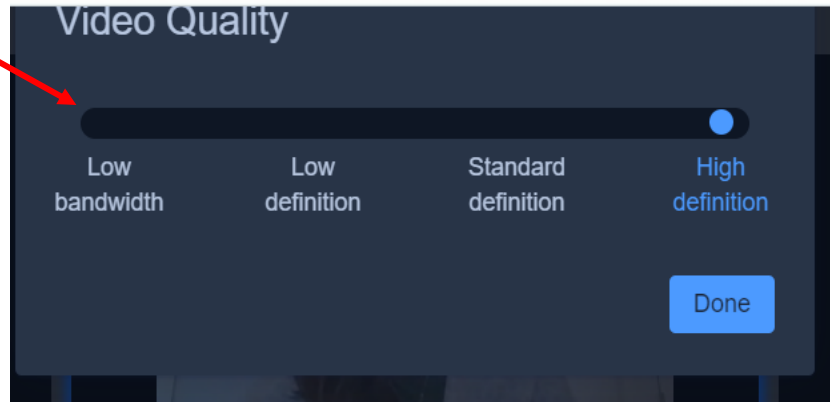
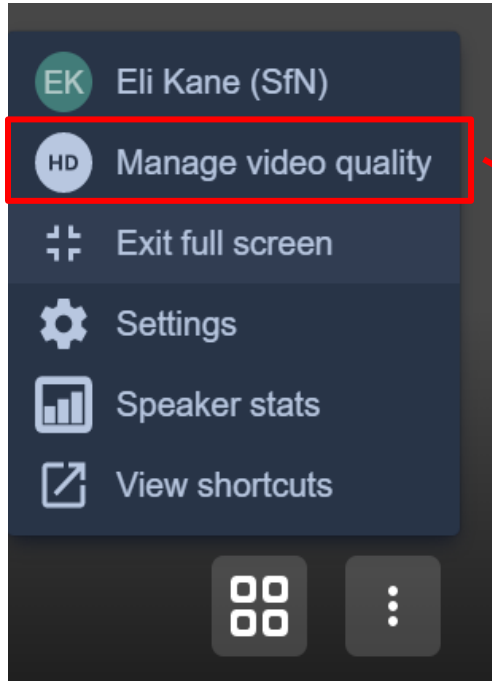


# Connect your Camera and Microphone Two Ways

Second way: Access both camera and microphone through the settings. Find settings by clicking the ellipsis on the far right of the bottom toolbar. The first tab in settings is “devices,” which contains camera, microphone, and audio output options.



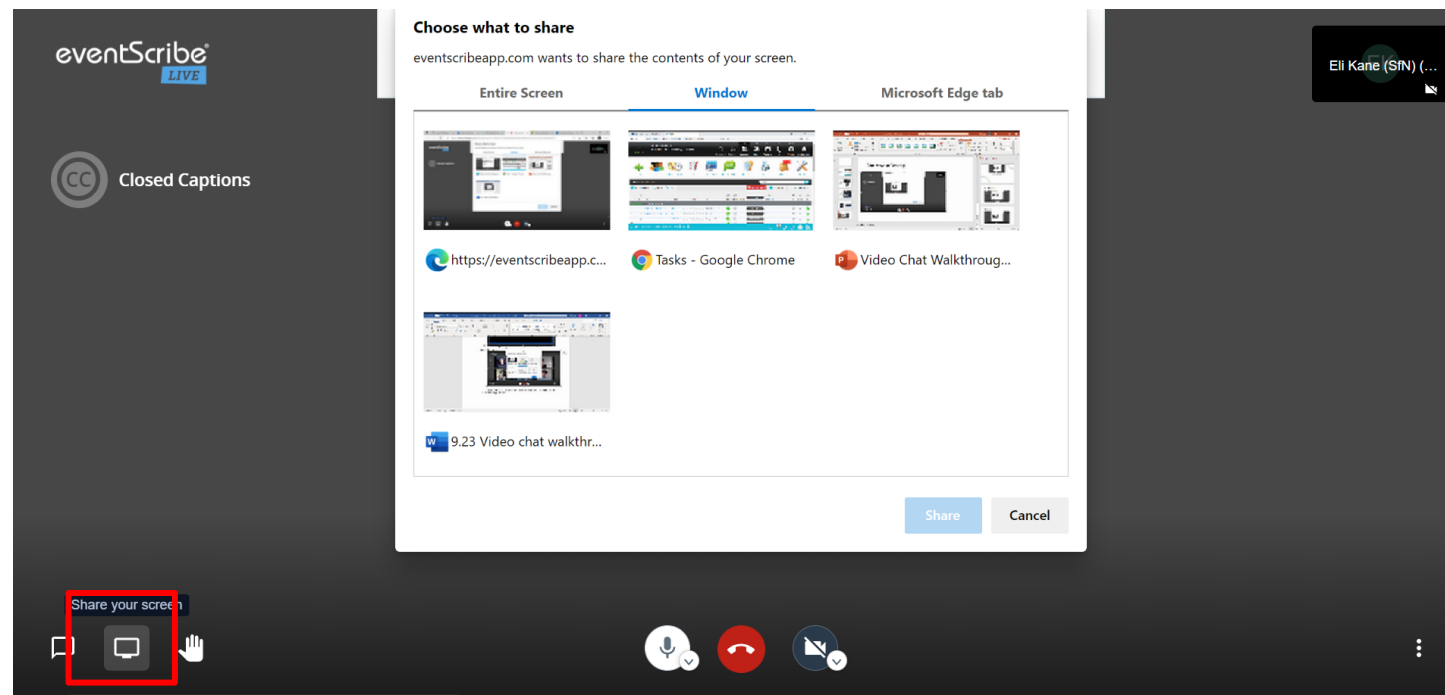
# Adjust Video Quality and Bandwidth



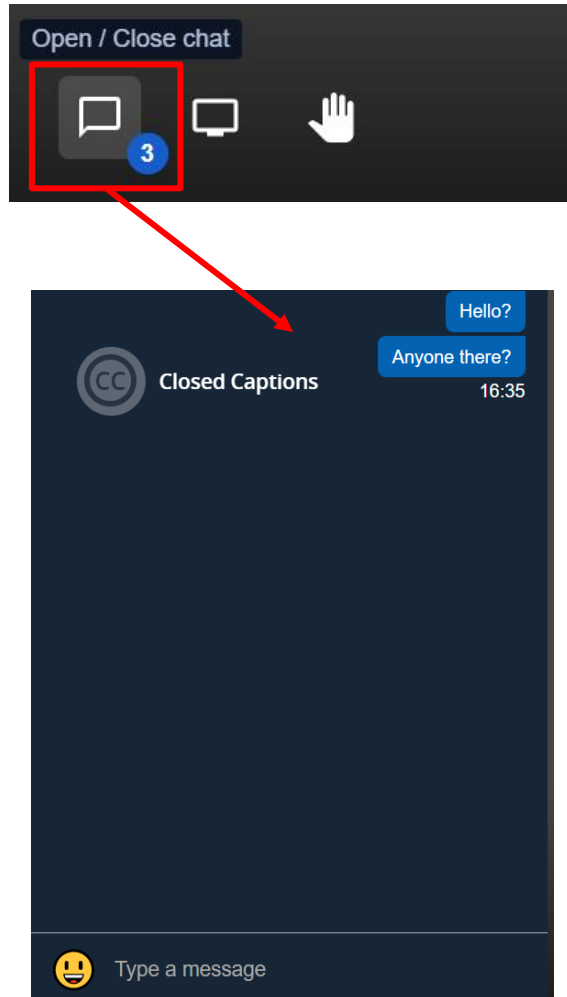
If your video is lagging or you are in an area with low internet connection, you can adjust the video quality and bandwidth. From the ellipsis at the far right of the bottom toolbar, select “manage video quality.” This opens a sliding scale that can be changed from High to Low definition. If you have poor internet connection, Low Bandwidth will stop video streaming but allow you to continue to listen to audio.

# Share your Screen

To share your screen, select the screen icon in the left of the bottom tool bar. You can choose between sharing your entire screen or a single window. Note: you must have the window open (not minimized) in order to share it.



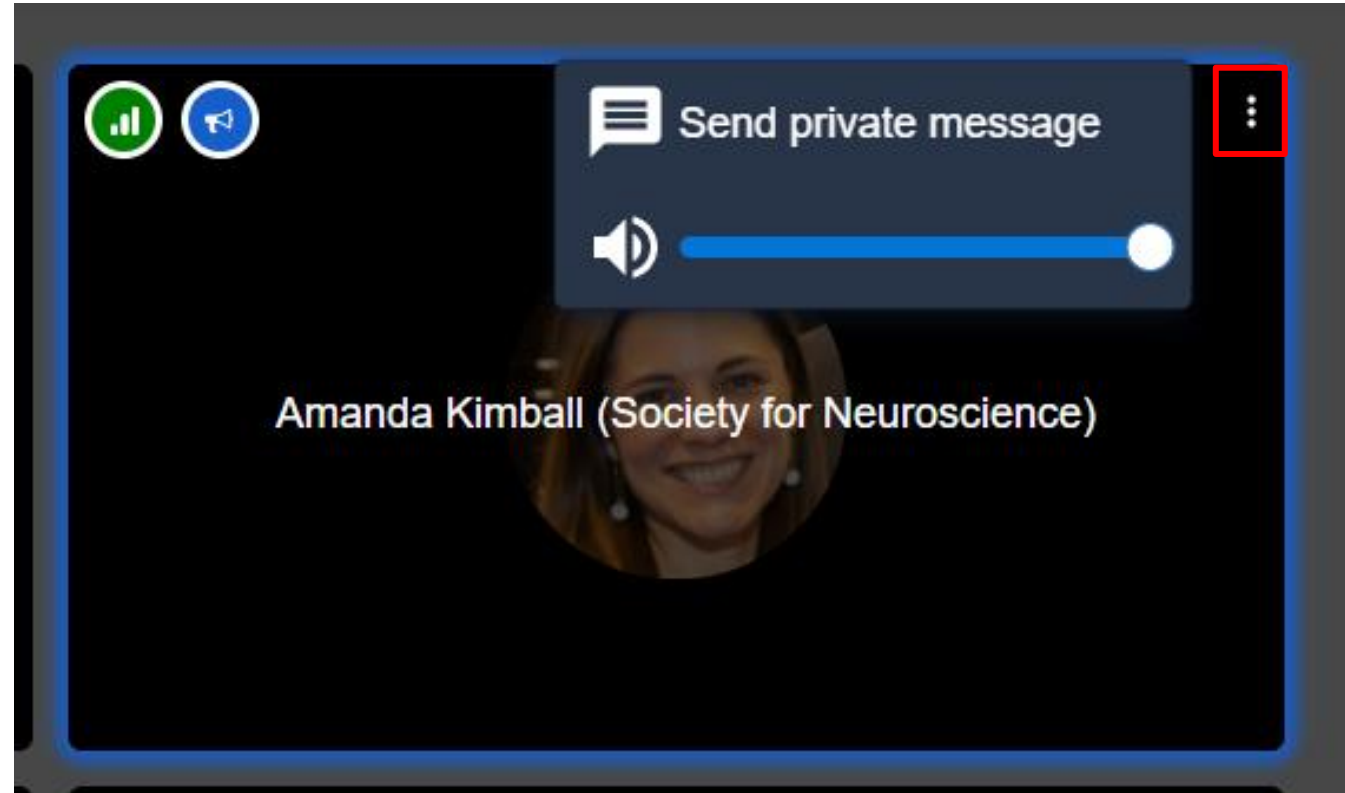
# Using the Chat Feature



To open in-video chat messaging, select the leftmost icon in the bottom tool bar. This opens the general chat that all participants can see. Typing in this field sends your message to all video chat participants. Note: the chat is only available during the video call. Messages will disappear once the call has ended. The text chat also supports emojis, which are accessed by pressing the smiley face next to the text entry field.

# Using the Chat Feature: Private Chat

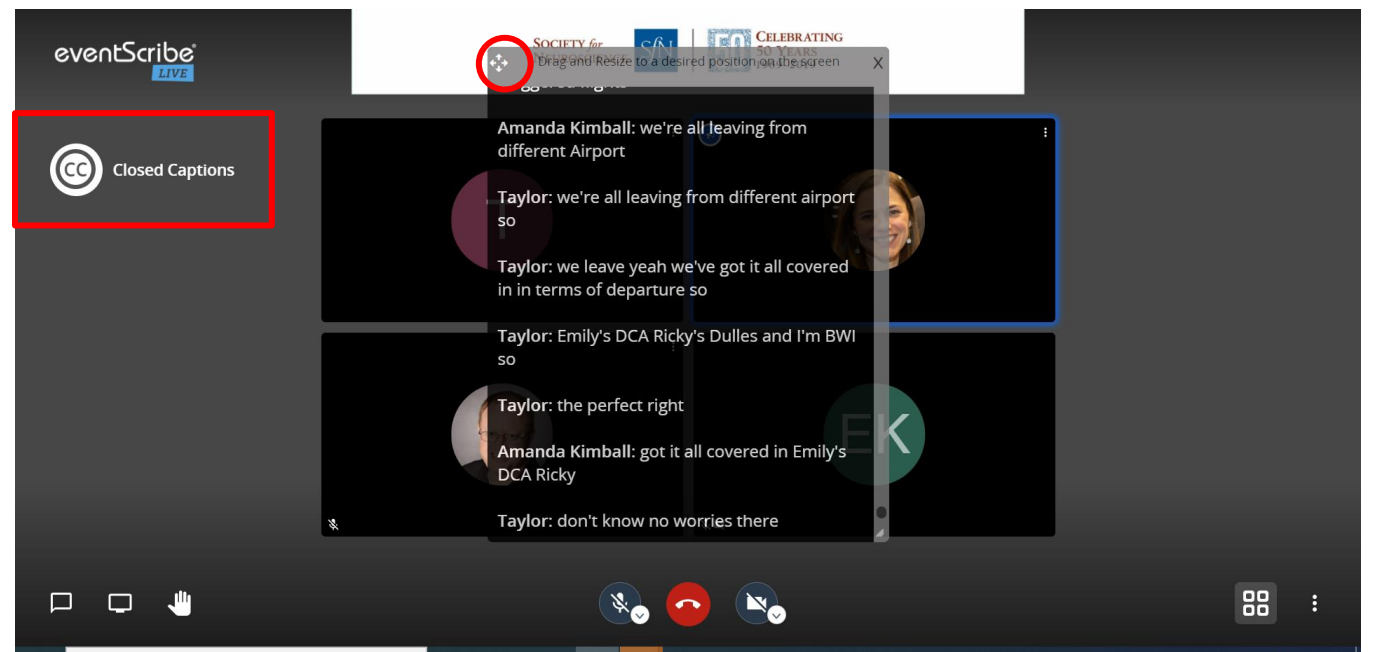
To privately message a single participant, click on the ellipsis next to their video tile and select “Send private message.”





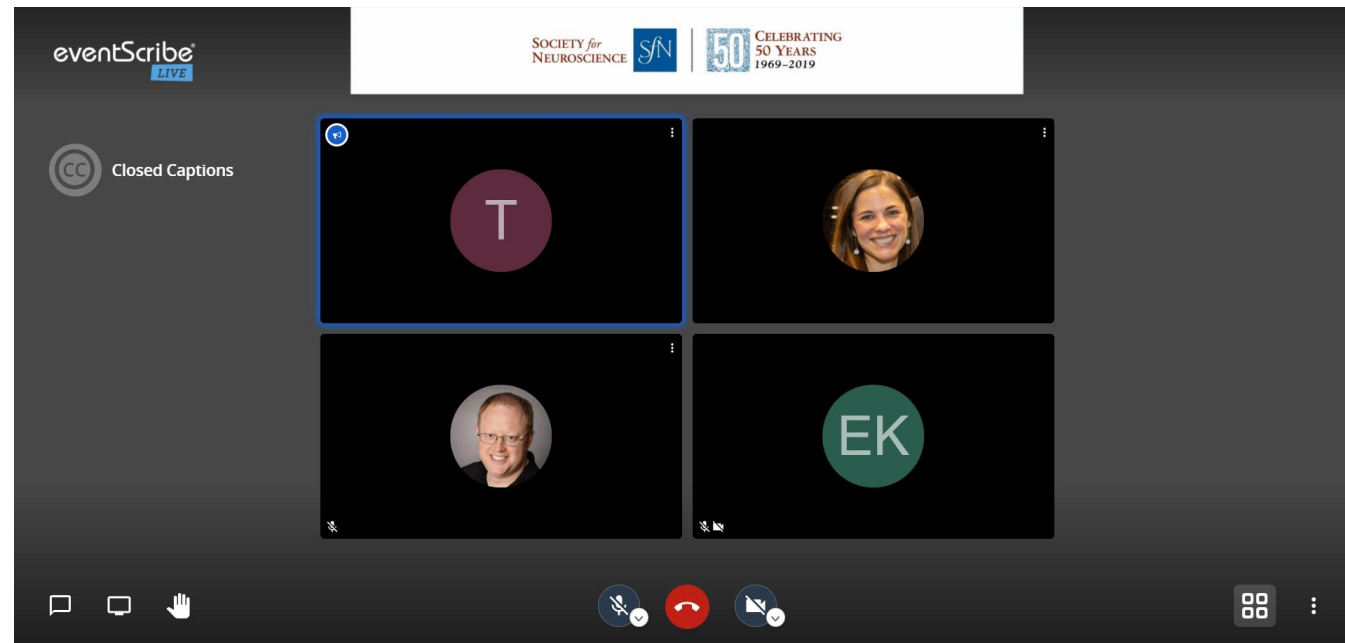
# Closed Captioning

This is a cool feature that transcribes what is being said in real-time into closed captions. This is an automated feature, so it is not perfect. To see closed captions, select the closed captions icon (CC) at any time. You can move the CC window by dragging it from the four-point icon in the top left corner.



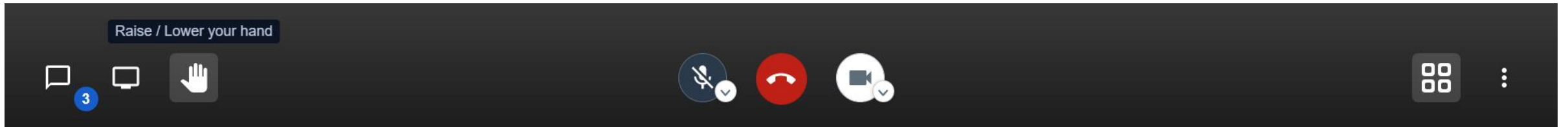
# Other Features: Pin a Video Tile

You can pin an individual speaker's tile by clicking on it.

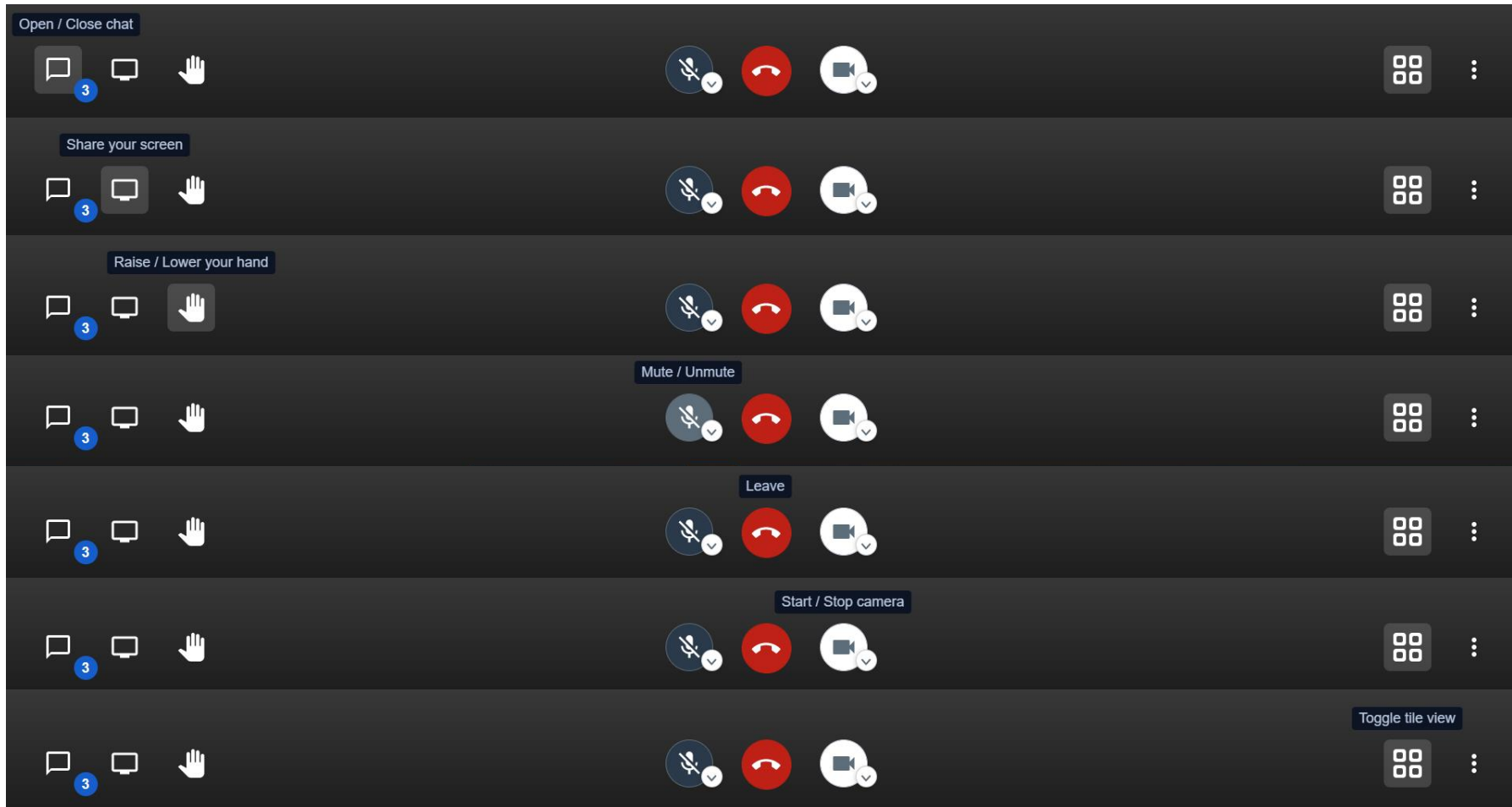


# Other Features: Raise your Hand

To get the host's attention without speaking, click the hand icon in the bottom tool bar.



# Bottom Tool Bar: What Does it Do?



From left to right:

1. chat
2. share screen
3. raise hand
4. mute/unmute/audio options
5. leave the chat
6. hide video/show video/camera options
7. toggle screen view between tile and speaker view
8. settings ellipsis with general settings, streaming quality settings, speaker stats, and your profile.

# Thank You!

Continue the conversation on Twitter at #SfN21

SOCIETY *for*  
NEUROSCIENCE



CELEBRATING  
50 YEARS  
1969-2019

