

List of Sessions by Theme and Day

All posters will be presented in the San Diego Convention Center, Halls B-H. All lecture, symposium, minisymposium, and nanosymposium rooms are located in the San Diego Convention Center.

Note: Theme J (History and Education) posters will be on display in Hall B beginning at 1 p.m. on Saturday, Nov. 3 and will remain posted until 5 p.m. on Sunday, Nov. 4. One-hour presentation times will occur either Saturday afternoon or Sunday morning.

THEME DESCRIPTIONS

- | | | | |
|---|--|---------------------------------------|-------------------------|
| A Development | C Neurodegenerative Disorders and Injury | E Motor Systems | H Cognition |
| B Neural Excitability, Synapses, and Glia | D Sensory Systems | F Integrative Physiology and Behavior | I Techniques |
| | | G Motivation and Emotion | J History and Education |

SESSION # / SESSION TITLE	SESSION TYPE	POSTER BOARD #	LOCATION	DATE	TIME	CME HOURS
Featured Lectures						
001	Dialogues Between Neuroscience and Society: Music and the Brain	Lecture	SDCC Ballroom 20	3 Sat	11 a.m.–1 p.m.	
009	Presidential Special Lecture: The dArc Matter of Synaptic Communication	Lecture	SDCC Ballroom 20	3 Sat	5:15–6:30 p.m.	1.25
182	Peter and Patricia Gruber Lecture: Decision, Reward, and the Basal Ganglia	Lecture	SDCC Ballroom 20	4 Sun	2:30–3:40 p.m.	
183	Presidential Special Lecture: Neurobiology of Social Behavior Circuits	Lecture	SDCC Ballroom 20	4 Sun	5:15–6:30 p.m.	1.25
264	David Kopf Lecture on Neuroethics: When Is an Adolescent an Adult?: Implications for Justice Policy	Lecture	SDCC Ballroom 20	5 Mon	10–11:10 a.m.	
351	Albert and Ellen Grass Lecture: Neural Sequences in Memory and Cognition	Lecture	SDCC Ballroom 20	5 Mon	3:15–4:25 p.m.	1.25
352	Presidential Special Lecture: From Nanoscale Dynamic Organization to Plasticity of Excitatory Synapses and Learning	Lecture	SDCC Ballroom 20	5 Mon	5:15–6:30 p.m.	1.25
535	History of Neuroscience Lecture: Deciphering Neural Circuits: From the Neuron Doctrine to the Connectome	Lecture	SDCC Ballroom 20	6 Tue	2:30–3:40 p.m.	
536	Presidential Special Lecture: From Salvia Divinorum to LSD: Toward a Molecular Understanding of Psychoactive Drug Actions	Lecture	SDCC Ballroom 20	6 Tue	5:15–6:30 p.m.	1.25
Theme A: Development						
002	Neuronal Guidance in Health and Disease	Symposium	SDCC 6A	3 Sat	1:30–4 p.m.	2.5
010	Brain Size, Structure, and Evolution	Nanosymposium	SDCC 33	3 Sat	1–2:45 p.m.	
029	Postnatal Neurogenesis: Temporal and Spatial Patterns	Poster	A1–A14	3 Sat	1–5 p.m.	
030	Environmental and Immunological Influences on Autism	Poster	A15–A30	3 Sat	1–5 p.m.	
031	Developmental Disorders: Animal Models of Neurodevelopmental Disease I	Poster	A31–B26	3 Sat	1–5 p.m.	
032	Developmental Disorders: Animal Models of Autism	Poster	B27–C23	3 Sat	1–5 p.m.	
033	Adolescent Development: Animal Models I	Poster	C24–D5	3 Sat	1–5 p.m.	
098	Molecular Mechanisms Underpinning Dopamine Neuron Development, Diversity, and Vulnerability	Minisymposium	SDCC 29D	4 Sun	8:30–11 a.m.	2.5
102	Axon and Dendrite Development: Axon Growth and Guidance: Adhesion, Cytoskeletal Dynamics, and Transport	Nanosymposium	SDCC 33	4 Sun	8–9:45 a.m.	
103	Animal Models of Neurodevelopmental Disease	Nanosymposium	SDCC 32	4 Sun	8–10:15 a.m.	
113	Nervous System Patterning and Developmental Cell Death	Poster	A1–A13	4 Sun	8 a.m.–noon	
114	Transplantation and Regeneration (PNS) and Neuroglial Interactions	Poster	A14–B5	4 Sun	8 a.m.–noon	
115	Transplantation and Regeneration in the CNS	Poster	B6–B27	4 Sun	8 a.m.–noon	

GENERAL INFORMATION PROGRAM | List of Sessions by Theme and Day

SESSION # / SESSION TITLE	SESSION TYPE	POSTER BOARD #	LOCATION	DATE	TIME	CME HOURS
116 Axon and Dendrite Development: Axon Growth and Guidance: Adhesion and Cytoskeletal Dynamics	Poster	B28–C18	SDCC Halls B–H	4 Sun	8 a.m.–noon	
117 Axon and Dendrite Development: Dendritic Growth and Branching	Poster	C19–D5	SDCC Halls B–H	4 Sun	8 a.m.–noon	
118 Synaptogenesis and Activity-Dependent Development: Synapse Formation	Poster	D6–D25	SDCC Halls B–H	4 Sun	8 a.m.–noon	
119 Developmental Disorders: Autism: Genetic Models	Poster	D26–D46	SDCC Halls B–H	4 Sun	8 a.m.–noon	
120 Autism Mechanisms and Therapeutic Development	Poster	D47–E19	SDCC Halls B–H	4 Sun	8 a.m.–noon	
121 Autism Spectrum Disorders: Neural Correlates in Humans	Poster	E20–E48	SDCC Halls B–H	4 Sun	8 a.m.–noon	
184 Postnatal Neurogenesis: Molecular Mechanisms	Nanosymposium		SDCC 1	4 Sun	1–3:30 p.m.	
185 Neural Stem Cells: Reprogramming, Regeneration, and Transplantation	Nanosymposium		SDCC 2	4 Sun	1–3 p.m.	
195 Neural Cell Lineage Specification	Poster	A1–A30	SDCC Halls B–H	4 Sun	1–5 p.m.	
196 Stem Cells and Neural Differentiation	Poster	A31–B26	SDCC Halls B–H	4 Sun	1–5 p.m.	
197 Axon and Dendrite Development: Axon Growth and Guidance: Axonal Transport and Trafficking	Poster	B27–C8	SDCC Halls B–H	4 Sun	1–5 p.m.	
266 Autism: Structural and Functional Correlates in Children	Nanosymposium		SDCC 32	5 Mon	8–11:30 a.m.	
277 Neurogenesis and Gliogenesis: Neuronal Development I	Poster	A1–A29	SDCC Halls B–H	5 Mon	8 a.m.–noon	
278 Stem Cells and Disease Modeling I	Poster	A30–B14	SDCC Halls B–H	5 Mon	8 a.m.–noon	
279 Stem Cells and Reprogramming: Neural Stem Cells: <i>In Vitro</i> Studies	Poster	B15–C8	SDCC Halls B–H	5 Mon	8 a.m.–noon	
280 Synaptogenesis and Activity-Dependent Development: Synapse Maturation and Remodeling	Poster	C9–C30	SDCC Halls B–H	5 Mon	8 a.m.–noon	
281 Adolescent Development: Human Imaging	Poster	C31–D15	SDCC Halls B–H	5 Mon	8 a.m.–noon	
282 Comparative Anatomy and Brain Evolution	Poster	D16–D38	SDCC Halls B–H	5 Mon	8 a.m.–noon	
344 Extracellular Vesicles: Insights Into Cell-to-Cell Communication in the Nervous System	Symposium		SDCC 6A	5 Mon	1:30–4 p.m.	2.5
353 Current Perspectives on Neural Circuit Assembly and Reorganization	Nanosymposium		SDCC 24	5 Mon	1–2:45 p.m.	
365 Postnatal Neurogenesis: Environmental and Pharmacological Regulation	Poster	A1–A19	SDCC Halls B–H	5 Mon	1–5 p.m.	
366 Stem Cells and Disease Modeling II	Poster	A20–B11	SDCC Halls B–H	5 Mon	1–5 p.m.	
367 Axon Growth and Guidance	Poster	B12–B24	SDCC Halls B–H	5 Mon	1–5 p.m.	
368 Behavioral Analyses of Autism in Humans and Rodent Models	Poster	B25–C22	SDCC Halls B–H	5 Mon	1–5 p.m.	
369 Mechanisms of Developmental Disorders: Animal Models	Poster	C23–D5	SDCC Halls B–H	5 Mon	1–5 p.m.	
434 RNA Control of Axonal Functions	Symposium		SDCC 6A	6 Tue	8:30–11 a.m.	2.5
443 Stem Cells and Disease Modeling: Neuropsychiatric and Neurodegenerative Disease	Nanosymposium		SDCC 31C	6 Tue	8–11:30 a.m.	
455 Adult Neurogenesis: Molecular Mechanisms	Poster	A1–A17	SDCC Halls B–H	6 Tue	8 a.m.–noon	
456 Autism: Cellular Mechanisms	Poster	A18–A32	SDCC Halls B–H	6 Tue	8 a.m.–noon	
457 Developmental Disorders: Animal Models of Neurodevelopmental Disease II	Poster	A33–B20	SDCC Halls B–H	6 Tue	8 a.m.–noon	
458 Development of Motor, Sensory, and Limbic Systems: Motor Systems	Poster	B21–C4	SDCC Halls B–H	6 Tue	8 a.m.–noon	
528 Genetic Specification of Neuronal Identity	Lecture		SDCC Ballroom 20	6 Tue	1–2:10 p.m.	1.25
537 Autism: From Genetic Models to Insights	Nanosymposium		SDCC 4	6 Tue	1–2:45 p.m.	
550 Neurogenesis and Gliogenesis: Neuronal Development II	Poster	A1–A28	SDCC Halls B–H	6 Tue	1–5 p.m.	
551 Neurogenesis and Gliogenesis: Glial Development and Interaction With Neurons	Poster	A29–B9	SDCC Halls B–H	6 Tue	1–5 p.m.	
552 Stem Cells and Reprogramming: Neural Lineage Reprogramming	Poster	B10–B19	SDCC Halls B–H	6 Tue	1–5 p.m.	
553 Sensory Circuit Assembly and Reorganization	Poster	B20–B32	SDCC Halls B–H	6 Tue	1–5 p.m.	
554 Rett Syndrome	Poster	C1–C16	SDCC Halls B–H	6 Tue	1–5 p.m.	
555 Mechanisms of Developmental Disorders	Poster	C17–D8	SDCC Halls B–H	6 Tue	1–5 p.m.	

GENERAL INFORMATION PROGRAM | List of Sessions by Theme and Day

SESSION # / SESSION TITLE	SESSION TYPE	POSTER BOARD #	LOCATION	DATE	TIME	CME HOURS
620 Neural Proteomics in Synapse Development and Function	Minisymposium		SDCC 29D	7 Wed	8:30–11 a.m.	2.5
624 Stem Cells and Disease Modeling: Neurodevelopment	Nanosymposium		SDCC 30E	7 Wed	8–11:30 a.m.	
636 Neural Cell Proliferation	Poster	A1–A28	SDCC Halls B–H	7 Wed	8 a.m.–noon	
637 Neural Cell Migration and Lineage Specification	Poster	A29–B16	SDCC Halls B–H	7 Wed	8 a.m.–noon	
638 Transplantation and Regeneration	Poster	B17–B28	SDCC Halls B–H	7 Wed	8 a.m.–noon	
639 Genes and Molecules Implicated in Autism Spectrum Disorders	Poster	B29–C8	SDCC Halls B–H	7 Wed	8 a.m.–noon	
640 Down Syndrome	Poster	C9–C23	SDCC Halls B–H	7 Wed	8 a.m.–noon	
641 Developmental Disorders: Animal Models of Neurodevelopmental Disease III	Poster	C24–D4	SDCC Halls B–H	7 Wed	8 a.m.–noon	
642 Structural and Functional Development of Sensory Systems	Poster	D5–D34	SDCC Halls B–H	7 Wed	8 a.m.–noon	
643 Development of Motor, Sensory, and Limbic Systems: Limbic System	Poster	D35–D42	SDCC Halls B–H	7 Wed	8 a.m.–noon	
644 Adolescent Development: Animal Models II	Poster	D43–E12	SDCC Halls B–H	7 Wed	8 a.m.–noon	
645 Adolescent Development: Mechanisms of Vulnerability	Poster	E13–E26	SDCC Halls B–H	7 Wed	8 a.m.–noon	
709 Sonic Hedgehog and Cell-Specific Programming: Circuits, Disease, and Repair	Minisymposium		SDCC 28A	7 Wed	1:30–4 p.m.	2.5
724 Neural Circuit Development: Molecules and Mechanisms	Poster	A1–A19	SDCC Halls B–H	7 Wed	1–5 p.m.	
725 Fragile X Syndrome I	Poster	A20–A34	SDCC Halls B–H	7 Wed	1–5 p.m.	
726 Fragile X Syndrome II	Poster	B1–B19	SDCC Halls B–H	7 Wed	1–5 p.m.	
727 Angelman and Other Developmental Disorders	Poster	B20–C8	SDCC Halls B–H	7 Wed	1–5 p.m.	
728 ADHD, SLI, Dyslexia, and Other Disorders	Poster	C9–C32	SDCC Halls B–H	7 Wed	1–5 p.m.	
Theme B: Neural Excitability, Synapses, and Glia						
011 Network Interactions: Oscillations and Synchrony: EEG Studies	Nanosymposium		SDCC 24	3 Sat	1–4 p.m.	
012 Animal Models of Epilepsy	Nanosymposium		SDCC 1	3 Sat	1–2:45 p.m.	
034 Neurotrophins	Poster	D6–D15	SDCC Halls B–H	3 Sat	1–5 p.m.	
035 Sensory Transduction and Other Ion Channels	Poster	D16–D30	SDCC Halls B–H	3 Sat	1–5 p.m.	
036 Long-Term Depression (LTD)	Poster	D31–D41	SDCC Halls B–H	3 Sat	1–5 p.m.	
037 Synaptic Plasticity: Homeostatic Plasticity I	Poster	D42–E17	SDCC Halls B–H	3 Sat	1–5 p.m.	
038 Synaptic Plasticity: Homeostatic Plasticity II	Poster	E18–E37	SDCC Halls B–H	3 Sat	1–5 p.m.	
039 Epilepsy	Poster	E38–F11	SDCC Halls B–H	3 Sat	1–5 p.m.	
040 Epilepsy: Networks, Dynamics, and Computation	Poster	F12–G9	SDCC Halls B–H	3 Sat	1–5 p.m.	
041 Epilepsy: Seizure Mechanisms	Poster	G10–H15	SDCC Halls B–H	3 Sat	1–5 p.m.	
042 Astrocyte Biology	Poster	H16–J10	SDCC Halls B–H	3 Sat	1–5 p.m.	
043 Oligodendrocyte Development and Function	Poster	J11–K13	SDCC Halls B–H	3 Sat	1–5 p.m.	
097 Advances in Enteric Neurobiology: The "Brain" in the Gut in Health and Disease	Minisymposium		SDCC 28A	4 Sun	8:30–11 a.m.	2.5
122 Metabotropic Glutamate and GABA B Receptors	Poster	E49–F8	SDCC Halls B–H	4 Sun	8 a.m.–noon	
123 Sodium Channels	Poster	F9–G1	SDCC Halls B–H	4 Sun	8 a.m.–noon	
124 Control of Neuronal Firing in Development and Disease	Poster	G2–F8	SDCC Halls B–H	4 Sun	8 a.m.–noon	
125 Oscillations and Synchrony in the Human Brain	Poster	H1–I8	SDCC Halls B–H	4 Sun	8 a.m.–noon	
126 Biology of Microglia	Poster	I9–K6	SDCC Halls B–H	4 Sun	8 a.m.–noon	
127 Microglia in Disease	Poster	K7–L15	SDCC Halls B–H	4 Sun	8 a.m.–noon	
128 Neuro-Oncology	Poster	L16–N4	SDCC Halls B–H	4 Sun	8 a.m.–noon	

GENERAL INFORMATION PROGRAM | List of Sessions by Theme and Day

SESSION # / SESSION TITLE	SESSION TYPE	POSTER BOARD #	LOCATION	DATE	TIME	CME HOURS
181 Cell Adhesion Molecules at the Intersection of Cell Type Identity and Neural Circuit Connectivity	Minisymposium		SDCC 29D	4 Sun	1:30–4 p.m.	2.5
198 Glutamate Transport and Signaling	Poster	C9–C26	SDCC Halls B–H	4 Sun	1–5 p.m.	
199 Monoamines I	Poster	C27–D18	SDCC Halls B–H	4 Sun	1–5 p.m.	
200 GABA(A) Receptors	Poster	D19–D44	SDCC Halls B–H	4 Sun	1–5 p.m.	
201 Structural Plasticity I	Poster	D45–E20	SDCC Halls B–H	4 Sun	1–5 p.m.	
202 Structural Plasticity II	Poster	E21–E36	SDCC Halls B–H	4 Sun	1–5 p.m.	
203 Control of Neuronal Firing	Poster	E37–F9	SDCC Halls B–H	4 Sun	1–5 p.m.	
204 Myelin-Related Disorders	Poster	F10–G2	SDCC Halls B–H	4 Sun	1–5 p.m.	
283 Structure and Function of Nicotinic Acetylcholine Receptors	Poster	D39–E18	SDCC Halls B–H	5 Mon	8 a.m.–noon	
284 Synaptic Connectivity and Synaptic Properties	Poster	E19–E29	SDCC Halls B–H	5 Mon	8 a.m.–noon	
285 LTP: Pre- and Postsynaptic Mechanisms	Poster	E30–F4	SDCC Halls B–H	5 Mon	8 a.m.–noon	
286 Network Interactions and Synaptic Integration I	Poster	F5–F21	SDCC Halls B–H	5 Mon	8 a.m.–noon	
287 Synaptic Plasticity	Poster	F22–G12	SDCC Halls B–H	5 Mon	8 a.m.–noon	
288 Synaptic Protein Dynamics	Poster	H1–H16	SDCC Halls B–H	5 Mon	8 a.m.–noon	
289 Anticonvulsant and Antiepileptic Therapies	Poster	H17–J5	SDCC Halls B–H	5 Mon	8 a.m.–noon	
290 Epilepsy: Human Studies	Poster	J6–K12	SDCC Halls B–H	5 Mon	8 a.m.–noon	
350 Rapid Antidepressant Action: Synaptic Mechanisms and Clinical Aspects	Basic-Translational-Clinical Roundtables		SDCC 30E	5 Mon	1:30–4 p.m.	2.5
370 NMDA Receptors	Poster	D6–D28	SDCC Halls B–H	5 Mon	1–5 p.m.	
371 Non-NMDA Receptors	Poster	D29–D40	SDCC Halls B–H	5 Mon	1–5 p.m.	
372 Neurotransmitter Release: Vesicle Dynamics	Poster	D41–E9	SDCC Halls B–H	5 Mon	1–5 p.m.	
373 Epilepsy: Experimental Therapeutics	Poster	E10–E24	SDCC Halls B–H	5 Mon	1–5 p.m.	
374 LTP: Kinases and Intracellular Signaling	Poster	E25–E44	SDCC Halls B–H	5 Mon	1–5 p.m.	
375 Intrinsic Membrane Properties: Neural Oscillators and Dendritic Properties	Poster	E45–F15	SDCC Halls B–H	5 Mon	1–5 p.m.	
376 Glial Mechanisms in Neurological Disorders	Poster	F16–H5	SDCC Halls B–H	5 Mon	1–5 p.m.	
438 Neuromodulation of Brain States in Health and Disease: Bridging Experiments and Computational Models	Minisymposium		SDCC 28A	6 Tue	8:30–11 a.m.	2.5
442 Neuronal Diversity Within the Ventral Tegmental Area and Co-Release of Neurotransmitters	Lecture		SDCC Ballroom 20	6 Tue	11:30 a.m.–12:40 p.m.	1.25
444 LTP: Intracellular Signaling, Pre- and Postsynaptic Mechanisms	Nanosymposium		SDCC 25	6 Tue	8–10:15 a.m.	
445 Network Interactions, Oscillations, and Synchrony	Nanosymposium		SDCC 24	6 Tue	8–10:15 a.m.	
446 Seizure, Trauma, and Post-Traumatic Stress Disorder	Nanosymposium		SDCC 1	6 Tue	8–10:30 a.m.	
459 G-Protein Coupled Receptors	Poster	C5–C26	SDCC Halls B–H	6 Tue	8 a.m.–noon	
460 Epilepsy: Ion Channels	Poster	C27–C38	SDCC Halls B–H	6 Tue	8 a.m.–noon	
461 Calcium Channels	Poster	D1–D16	SDCC Halls B–H	6 Tue	8 a.m.–noon	
462 Postsynaptic Organization and Structure	Poster	D17–D42	SDCC Halls B–H	6 Tue	8 a.m.–noon	
463 Network Interactions and Synaptic Integration II	Poster	D43–E12	SDCC Halls B–H	6 Tue	8 a.m.–noon	
464 Short-Term Synaptic Plasticity	Poster	E13–E28	SDCC Halls B–H	6 Tue	8 a.m.–noon	
465 Transcription and Translation in Synaptic Plasticity	Poster	E29–F3	SDCC Halls B–H	6 Tue	8 a.m.–noon	
533 Molecular and Nano-Organization of Synapses	Minisymposium		SDCC 28A	6 Tue	1:30–4 p.m.	2.5

GENERAL INFORMATION PROGRAM | List of Sessions by Theme and Day

SESSION # / SESSION TITLE	SESSION TYPE	POSTER BOARD #	LOCATION	DATE	TIME	CME HOURS
538 Neurotransmitter Release	Nanosymposium		SDCC 32	6 Tue	1–2:45 p.m.	
539 Postsynaptic Organization and Structure	Nanosymposium		SDCC 31C	6 Tue	1–4:15 p.m.	
556 Opiates, Cytokines, and Other Neuropeptides	Poster	D9–D29	SDCC Halls B–H	6 Tue	1–5 p.m.	
557 Glycine Receptors and Other Ligand Gated Ion Channels	Poster	D30–E1	SDCC Halls B–H	6 Tue	1–5 p.m.	
558 Potassium Channels	Poster	E2–E28	SDCC Halls B–H	6 Tue	1–5 p.m.	
559 Presynaptic Organization	Poster	E29–E48	SDCC Halls B–H	6 Tue	1–5 p.m.	
560 Mechanisms of Seizure Generation and Epilepsy	Poster	E49–G2	SDCC Halls B–H	6 Tue	1–5 p.m.	
561 Models of Developmental Epilepsies and Seizure Disorders	Poster	G3–I2	SDCC Halls B–H	6 Tue	1–5 p.m.	
614 Biochemical Computation in Postsynaptic Compartments: Implications for Synaptic Plasticity, Learning, and Memory	Lecture		SDCC Ballroom 20	7 Wed	8:30–9:40 a.m.	1.25
625 Epilepsy: Human Studies	Nanosymposium		SDCC 32	7 Wed	8–10:15	
646 Monoamines II	Poster	E27–E46	SDCC Halls B–H	7 Wed	8 a.m.–noon	
647 Synaptic Transmission: Modulation: ACh, Amino Acids, and GABA	Poster	E47–F24	SDCC Halls B–H	7 Wed	8 a.m.–noon	
648 Synaptic Transmission: Modulation: Mechanisms of Action	Poster	F25–H12	SDCC Halls B–H	7 Wed	8 a.m.–noon	
649 Glia in Energy Homeostasis and Disease	Poster	H13–I10	SDCC Halls B–H	7 Wed	8 a.m.–noon	
650 Glial Mechanisms in Neurodegenerative Diseases	Poster	I11–J7	SDCC Halls B–H	7 Wed	8 a.m.–noon	
651 Glial-Neuron Interactions	Poster	J8–K16	SDCC Halls B–H	7 Wed	8 a.m.–noon	
652 Glial Mechanisms: Glia-Neuron Interactions: CNS	Poster	K17–M10	SDCC Halls B–H	7 Wed	8 a.m.–noon	
653 Demyelinating Disorders: Molecular and Cellular Mechanisms: Therapeutics	Poster	M11–O5	SDCC Halls B–H	7 Wed	8 a.m.–noon	
705 Unveiling the Extracellular Space of the Brain: From Super-Resolved Microstructure to <i>In Vivo</i> Function	Symposium		SDCC 6A	7 Wed	1:30–4 p.m.	2.5
710 Multitransmitter Neurons: The Function and Regulation of Neurotransmitter Cotransmission	Minisymposium		SDCC 29D	7 Wed	1:30–4 p.m.	2.5
711 Astrocytes: Disease Mechanisms	Nanosymposium		SDCC 32	7 Wed	1–2:45 p.m.	
729 Calcium Channels: Regulation and Modulation	Poster	C33–D8	SDCC Halls B–H	7 Wed	1–5 p.m.	
730 HCN Channels	Poster	D9–D18	SDCC Halls B–H	7 Wed	1–5 p.m.	
731 Network Interactions: Signal Propagation	Poster	D19–D31	SDCC Halls B–H	7 Wed	1–5 p.m.	
732 Oscillations and Synchrony: Unit Studies	Poster	D32–D42	SDCC Halls B–H	7 Wed	1–5 p.m.	
733 Oscillations and Synchrony: LFP Studies I	Poster	D43–E8	SDCC Halls B–H	7 Wed	1–5 p.m.	
734 Oscillations and Synchrony: LFP Studies II	Poster	E9–E23	SDCC Halls B–H	7 Wed	1–5 p.m.	
735 Network Interactions	Poster	E24–E46	SDCC Halls B–H	7 Wed	1–5 p.m.	
Theme C: Neurodegenerative Disorders and Injury						
013 Alzheimer's Disease and Other Dementias: Genetic Analyses	Nanosymposium		SDCC 25	3 Sat	1–3:45 p.m.	
014 Parkinson's Disease: Diagnostics and Clinical Trials	Nanosymposium		SDCC 5	3 Sat	1–2:45 p.m.	
015 Neurotoxicity, Inflammation, and Neuroprotection: Advances in Nanomedicine	Nanosymposium		SDCC 2	3 Sat	1–4 p.m.	
044 Brain Wellness and Aging: Molecular Mechanisms	Poster	K14–M8	SDCC Halls B–H	3 Sat	1–5 p.m.	
045 Alzheimer's Disease and Other Dementias: Abeta Mechanisms of Toxicity I	Poster	M9–N10	SDCC Halls B–H	3 Sat	1–5 p.m.	
046 Alzheimer's Disease and Other Dementias: APP/Abeta: Animal and Cellular Models I	Poster	N11–P12	SDCC Halls B–H	3 Sat	1–5 p.m.	
047 Alzheimer's Disease and Other Dementias: Tau: Biochemistry and Physiology	Poster	P13–Q10	SDCC Halls B–H	3 Sat	1–5 p.m.	
048 Alzheimer's Disease and Other Dementias: Tau: Animal and Cellular Models	Poster	Q11–R16	SDCC Halls B–H	3 Sat	1–5 p.m.	
049 Alzheimer's Disease and Other Dementias: Therapeutic Strategies: Preclinical Animal Models I	Poster	R17–T2	SDCC Halls B–H	3 Sat	1–5 p.m.	

GENERAL INFORMATION PROGRAM | List of Sessions by Theme and Day

SESSION # / SESSION TITLE	SESSION TYPE	POSTER BOARD #	LOCATION	DATE	TIME	CME HOURS
050 Parkinson's Disease: Animal Models and Associated Behaviors	Poster	T3-U11	SDCC Halls B-H	3 Sat	1-5 p.m.	
051 Parkinson's Disease: Human Studies: Genetics and Diagnostic	Poster	U12-W8	SDCC Halls B-H	3 Sat	1-5 p.m.	
052 Neuromuscular Diseases: Motor Neuron Disease: <i>In vitro</i> Studies	Poster	W9-X12	SDCC Halls B-H	3 Sat	1-5 p.m.	
053 Neurotoxicity, Inflammation, and Neuroprotection: Preclinical Studies	Poster	X13-Z2	SDCC Halls B-H	3 Sat	1-5 p.m.	
054 Stroke, Damage, or Disease: Assessment and Treatment I	Poster	Z3-BB3	SDCC Halls B-H	3 Sat	1-5 p.m.	
055 Stroke Imaging and Diagnostic Studies: Vascular and Movement Emphasis During Recovery	Poster	BB4-CC12	SDCC Halls B-H	3 Sat	1-5 p.m.	
056 Brain Injury and Trauma: Cellular and Molecular Mechanisms I	Poster	CC13-EE3	SDCC Halls B-H	3 Sat	1-5 p.m.	
099 What We Know, What We Don't Know: How Can We Better Understand Alzheimer's Disease to Develop Effective Treatments?	Basic-Translational-Clinical Roundtables		SDCC 10	4 Sun	8:30-11 a.m.	2.5
104 Parkinson's Disease: Therapeutic Strategies: Preclinical Animal Models	Nanosymposium		SDCC 4	4 Sun	8-10 a.m.	
129 Brain Wellness and Aging: Metabolism, Oxidative Stress, and Cellular Mechanisms	Poster	N5-P6	SDCC Halls B-H	4 Sun	8 a.m.-noon	
130 Brain Wellness and Aging	Poster	P7-Q9	SDCC Halls B-H	4 Sun	8 a.m.-noon	
131 Alzheimer's Disease and Other Dementias: Abeta, Tau, and Neurodegeneration	Poster	Q10-R14	SDCC Halls B-H	4 Sun	8 a.m.-noon	
132 Alzheimer's Disease and Other Dementias: APP/Abeta: Animal and Cellular Models II	Poster	R14-S12	SDCC Halls B-H	4 Sun	8 a.m.-noon	
133 Alzheimer's Disease and Other Dementias: Therapeutic Strategies: Preclinical Cellular Models	Poster	S13-T9	SDCC Halls B-H	4 Sun	8 a.m.-noon	
134 Parkinson's Disease: Molecular and Cellular Mechanisms	Poster	T10-U3	SDCC Halls B-H	4 Sun	8 a.m.-noon	
135 Neurotoxicity, Inflammation, and Neuroprotection: Animal Models	Poster	U4-V3	SDCC Halls B-H	4 Sun	8 a.m.-noon	
136 Ischemia: Neuroprotection	Poster	V4-V14	SDCC Halls B-H	4 Sun	8 a.m.-noon	
137 Stroke, Damage, or Disease: Assessment and Treatment II	Poster	V15-W15	SDCC Halls B-H	4 Sun	8 a.m.-noon	
138 Spinal Cord Injury I	Poster	W16-Y1	SDCC Halls B-H	4 Sun	8 a.m.-noon	
175 Clinical Neuroscience Lecture: From Axon Regeneration to Functional Recovery After CNS Injury	Lecture		SDCC Ballroom 20	4 Sun	1-2:10 p.m.	1.25
186 Brain Wellness and Aging: Molecular Mechanisms	Nanosymposium		SDCC 30B	4 Sun	1-3:45 p.m.	
187 Alzheimer's Disease: Synapses, Mechanisms, and Models	Nanosymposium		SDCC 33	4 Sun	1-4 p.m.	
188 Alzheimer's Disease and Other Dementias: Tau and TDP-43 Proteinopathies	Nanosymposium		SDCC 5	4 Sun	1-3:15 p.m.	
189 Parkinson's Disease: LRRK2 Mechanisms, Targets, and Pathways	Nanosymposium		SDCC 25	4 Sun	1-2:30 p.m.	
190 Stroke Recovery: Non-Pharmacological Approaches and Novel Diagnostics	Nanosymposium		SDCC 32	4 Sun	1-3:15 p.m.	
205 Altered Energy Homeostasis in Alzheimer's Disease	Poster	G3-H13	SDCC Halls B-H	4 Sun	1-5 p.m.	
206 Alzheimer's Disease and Other Dementias: Frontotemporal Lobar Degeneration: Vascular Disease	Poster	H14-J8	SDCC Halls B-H	4 Sun	1-5 p.m.	
207 Parkinson's Disease: Cellular Mechanisms	Poster	J9-L1	SDCC Halls B-H	4 Sun	1-5 p.m.	
208 Therapeutic Developments in ALS	Poster	L2-M13	SDCC Halls B-H	4 Sun	1-5 p.m.	
209 Neurotoxicity, Inflammation, and Neuroprotection: Mechanisms of Neurodegeneration I	Poster	M14-O10	SDCC Halls B-H	4 Sun	1-5 p.m.	
210 Neurotoxicity, Inflammation, and Neuroprotective Mechanisms: Preclinical	Poster	O11-Q1	SDCC Halls B-H	4 Sun	1-5 p.m.	
211 Brain Injury and Trauma: Animal Models of Brain Injury	Poster	Q2-R17	SDCC Halls B-H	4 Sun	1-5 p.m.	
212 Brain Injury and Trauma: Human Studies	Poster	R18-S17	SDCC Halls B-H	4 Sun	1-5 p.m.	
213 Spinal Cord Injury and Plasticity: Cellular and Molecular Mechanisms I	Poster	S18-U10	SDCC Halls B-H	4 Sun	1-5 p.m.	
257 Repairing the Injured Nervous System: Inhibiting the Inhibitors	Symposium		SDCC 6A	5 Mon	8:30-11 a.m.	2.5
263 Molecular Therapies for Neurological Diseases	Basic-Translational-Clinical Roundtables		SDCC 10	5 Mon	8:30-11 a.m.	2.5

GENERAL INFORMATION PROGRAM | List of Sessions by Theme and Day

SESSION # / SESSION TITLE	SESSION TYPE	POSTER BOARD #	LOCATION	DATE	TIME	CME HOURS
267 Alzheimer's Disease: Neuroinflammation and Immune Actions	Nanosymposium		SDCC 24	5 Mon	8–11 a.m.	
268 Alzheimer's Disease and Other Dementias: Therapeutic Strategies: Preclinical Animal Models	Nanosymposium		SDCC 33	5 Mon	8–11:30 a.m.	
269 Tauopathies, Tau-Dementias, and Prion Diseases: Cellular and Molecular Mechanisms	Nanosymposium		SDCC 1	5 Mon	8–11:15 a.m.	
291 Brain Wellness and Aging: Pharmacological and Non-Pharmacological Interventions	Poster	K13–M4	SDCC Halls B–H	5 Mon	8 a.m.–noon	
292 Parkinson's Disease: Preclinical Animal Studies: Cellular and Molecular I	Poster	M5–N12	SDCC Halls B–H	5 Mon	8 a.m.–noon	
293 Tauopathies and Synucleinopathies: Cellular and Molecular Mechanisms	Poster	O1–P3	SDCC Halls B–H	5 Mon	8 a.m.–noon	
294 Ischemia I	Poster	P4–R4	SDCC Halls B–H	5 Mon	8 a.m.–noon	
295 Brain Injury and Trauma: Animal Models of Brain Injury: Physiology and Behavior I	Poster	R5–S10	SDCC Halls B–H	5 Mon	8 a.m.–noon	
296 Spinal Cord Injury II	Poster	S11–U1	SDCC Halls B–H	5 Mon	8 a.m.–noon	
297 Spinal Cord Injury and Plasticity: Training, Rehabilitation, and Repair: Animal Models	Poster	U2–V15	SDCC Halls B–H	5 Mon	8 a.m.–noon	
298 Spinal Cord Injury and Plasticity: Neurophysiology I	Poster	V16–W13	SDCC Halls B–H	5 Mon	8 a.m.–noon	
345 Global Efforts to Build More Predictive Animal Models of Neurodegenerative Disease	Symposium		SDCC 6B	5 Mon	1:30–4 p.m.	2.5
354 Brain Wellness and Aging: Systemic Factors and Brain Function	Nanosymposium		SDCC 33	5 Mon	1–2:45 p.m.	
355 Motor Neuron and Other Neuromuscular Diseases: <i>In vitro</i> Studies	Nanosymposium		SDCC 30B	5 Mon	1–4 p.m.	
356 Spinal Cord Injury: Factors Influencing Recovery	Nanosymposium		SDCC 7	5 Mon	1–2:45 p.m.	
377 Parkinson's Disease: L-DOPA Induced Dyskinesia	Poster	H6–H15	SDCC Halls B–H	5 Mon	1–5 p.m.	
378 Dystonia, Tremor, and Other Movement Disorders	Poster	H16–J4	SDCC Halls B–H	5 Mon	1–5 p.m.	
379 ALS Mechanisms	Poster	J5–L2	SDCC Halls B–H	5 Mon	1–5 p.m.	
380 Neuromuscular Diseases: Other Neuromuscular Diseases	Poster	L3–L17	SDCC Halls B–H	5 Mon	1–5 p.m.	
381 Neurotoxicity, Inflammation, and Neuroprotection: Mechanisms of Neurodegeneration II	Poster	L18–N8	SDCC Halls B–H	5 Mon	1–5 p.m.	
382 Neurotoxicity, Neuroinflammation, HIV, and Infections I	Poster	N9–O11	SDCC Halls B–H	5 Mon	1–5 p.m.	
383 Ischemia II	Poster	O12–Q9	SDCC Halls B–H	5 Mon	1–5 p.m.	
384 Stroke Recovery: Pharmacological Approaches to Therapy	Poster	Q10–S7	SDCC Halls B–H	5 Mon	1–5 p.m.	
385 Stroke Rehabilitation Movement Manipulation, Diagnostics, and White Matter	Poster	S8–T3	SDCC Halls B–H	5 Mon	1–5 p.m.	
386 Spinal Cord Injury and Plasticity: Training, Rehabilitation, and Repair: Human	Poster	T4–T15	SDCC Halls B–H	5 Mon	1–5 p.m.	
387 Spinal Cord Injury and Plasticity: Neurophysiology II	Poster	T16–V2	SDCC Halls B–H	5 Mon	1–5 p.m.	
433 Understanding Regeneration of Complex Body Parts	Lecture		SDCC Ballroom 20	6 Tue	8:30–9:40 a.m.	1.25
437 Mechanisms of Tau Oligomer-Induced Synaptic Impairment and Potential Treatment Strategies	Minisymposium		SDCC 6E	6 Tue	8:30–11 a.m.	2.5
447 Parkinson's Disease: Alpha-Synuclein: Models and Mechanisms	Nanosymposium		SDCC 32	6 Tue	8–10 a.m.	
448 Neurotoxicity, Inflammation, and Neuroprotection: Cellular Stress and Death Mechanisms	Nanosymposium		SDCC 7	6 Tue	8–10:45 a.m.	
449 Neurotoxicity, Inflammation, and Neuroprotection: Mechanisms of Neurodegeneration	Nanosymposium		SDCC 30B	6 Tue	8–10 a.m.	
466 Alzheimer's Disease and Other Dementias: Genetic Analysis and Omics Approaches	Poster	F4–G7	SDCC Halls B–H	6 Tue	8 a.m.–noon	
467 Alzheimer's Disease and Other Dementias: Therapeutic Strategies: Preclinical Animal Models II	Poster	G8–16	SDCC Halls B–H	6 Tue	8 a.m.–noon	
468 Alzheimer's Disease and Other Dementias: Therapeutic Strategies: Preclinical Animal Models III	Poster	17–J13	SDCC Halls B–H	6 Tue	8 a.m.–noon	
469 Alzheimer's Disease and Other Dementias: Biomarkers	Poster	J14–L9	SDCC Halls B–H	6 Tue	8 a.m.–noon	
470 Parkinson's Disease: Therapeutic Strategies: Cellular Models	Poster	L10–M10	SDCC Halls B–H	6 Tue	8 a.m.–noon	
471 Ataxias	Poster	M11–O8	SDCC Halls B–H	6 Tue	8 a.m.–noon	
472 Studies of ALS in Animal Models	Poster	O9–Q7	SDCC Halls B–H	6 Tue	8 a.m.–noon	
473 Neurotoxicity, Inflammation, and Neuroprotection: Cellular Stress and Death Mechanisms I	Poster	Q8–S5	SDCC Halls B–H	6 Tue	8 a.m.–noon	

GENERAL INFORMATION PROGRAM | List of Sessions by Theme and Day

SESSION # / SESSION TITLE	SESSION TYPE	POSTER BOARD #	LOCATION	DATE	TIME	CME HOURS
474 Neurotoxicity, Inflammation, and Neuroprotection: Mechanisms of Neurotoxicity I	Poster	S6–T9	SDCC Halls B–H	6 Tue	8 a.m.–noon	
475 Ischemia III	Poster	T10–V8	SDCC Halls B–H	6 Tue	8 a.m.–noon	
476 Spinal Cord Injury and Plasticity: Cellular and Molecular Mechanisms II	Poster	V9–W15	SDCC Halls B–H	6 Tue	8 a.m.–noon	
477 Spinal Cord Injury III	Poster	W16–Y13	SDCC Halls B–H	6 Tue	8 a.m.–noon	
529 Organelle Dynamics and Proteostasis in Neuronal Homeostasis and Degeneration	Symposium		SDCC 6A	6 Tue	1:30–4 p.m.	2.5
540 Alzheimer's Disease and Other Dementias: ApoE and Associated Pathways	Nanosymposium		SDCC 24	6 Tue	1–2:30 p.m.	
541 Neurotoxicity, Neuroinflammation, and Neurodegeneration	Nanosymposium		SDCC 7	6 Tue	1–4:15 p.m.	
542 Transplantation and Regeneration: PNS	Nanosymposium		SDCC 25	6 Tue	1–2:45 p.m.	
562 Neurotoxicity, Inflammation, and Neuroprotection: Cellular Stress and Death Mechanisms II	Poster	I3–J9	SDCC Halls B–H	6 Tue	1–5 p.m.	
563 Ischemia IV	Poster	J10–L5	SDCC Halls B–H	6 Tue	1–5 p.m.	
564 Brain Injury and Trauma: Cellular and Molecular Mechanisms II	Poster	L6–M9	SDCC Halls B–H	6 Tue	1–5 p.m.	
565 Brain Injury and Trauma: Brain: Histology and Cellular Markers of Brain Injury	Poster	M10–N4	SDCC Halls B–H	6 Tue	1–5 p.m.	
566 Brain Injury and Trauma: Human Studies II	Poster	N5–P1	SDCC Halls B–H	6 Tue	1–5 p.m.	
567 Brain Injury and Trauma: Pre-Clinical Therapeutic Strategies	Poster	P2–Q10	SDCC Halls B–H	6 Tue	1–5 p.m.	
568 Spinal Cord Injury and Plasticity: Animal Models and Human Studies	Poster	Q11–S8	SDCC Halls B–H	6 Tue	1–5 p.m.	
569 Spinal Cord Injury IV	Poster	S9–T16	SDCC Halls B–H	6 Tue	1–5 p.m.	
619 The Endolysosomal System and Proteostasis: From Development to Degeneration	Minisymposium		SDCC 28A	7 Wed	8:30–11 a.m.	2.5
626 Alzheimer's Disease and Other Dementias: APP and Metabolites: Cleavage and Processing	Nanosymposium		SDCC 33	7 Wed	8–10:45 a.m.	
627 Alzheimer's Disease and Other Dementias: Abeta and Tau Mechanisms and Therapeutics	Nanosymposium		SDCC 7	7 Wed	8–10:45 a.m.	
628 Parkinson's Disease: Mechanisms and Genetics	Nanosymposium		SDCC 25	7 Wed	8–9:45 a.m.	
629 Neurotoxicity, Inflammation, and Neuroprotection: Neuroinflammation: Neurodegeneration	Nanosymposium		SDCC 24	7 Wed	8–10:45 a.m.	
654 Parkinson's Disease: Deep Brain Stimulation	Poster	O6–P3	SDCC Halls B–H	7 Wed	8 a.m.–noon	
655 Parkinson's Disease: LRRK2 Mechanisms, Targets, and Pathways	Poster	P4–R2	SDCC Halls B–H	7 Wed	8 a.m.–noon	
656 Parkinson's Disease: Therapeutic Strategies: Clinical Trials	Poster	R3–S3	SDCC Halls B–H	7 Wed	8 a.m.–noon	
657 Huntington's Disease: Molecular Mechanisms I	Poster	S4–T5	SDCC Halls B–H	7 Wed	8 a.m.–noon	
658 Neurotoxicity, Inflammation, and Neuroprotection: Neuroinflammation: Microglia	Poster	T6–U6	SDCC Halls B–H	7 Wed	8 a.m.–noon	
659 Neurotoxicity, Inflammation, and Neurodegeneration	Poster	U7–V15	SDCC Halls B–H	7 Wed	8 a.m.–noon	
660 Neurotoxicity, Inflammation, and Neuroprotection: Neuroinflammation: Animal Models	Poster	V16–W14	SDCC Halls B–H	7 Wed	8 a.m.–noon	
661 Neurotoxicity, Neuroinflammation, HIV, and Infections II	Poster	W15–Y1	SDCC Halls B–H	7 Wed	8 a.m.–noon	
662 Stroke Recovery: Non-Pharmacological Approaches to Therapy Cellular and Brain Stimulation	Poster	Y2–Y17	SDCC Halls B–H	7 Wed	8 a.m.–noon	
663 Brain Injury and Trauma: Animal Models of Brain Injury: Physiology and Behavior II	Poster	Y18–AA10	SDCC Halls B–H	7 Wed	8 a.m.–noon	
664 Brain Injury and Trauma: Human Studies I	Poster	AA11–CC3	SDCC Halls B–H	7 Wed	8 a.m.–noon	
665 Brain Injury and Trauma: Peripheral Nerve Trauma, Crush, and Toxic Injury	Poster	CC4–DD2	SDCC Halls B–H	7 Wed	8 a.m.–noon	
712 Imaging Studies and Biomarkers in Alzheimer's Disease	Nanosymposium		SDCC 31C	7 Wed	1–2:45 p.m.	
713 Alzheimer's Disease and Other Dementias: Abeta: Pathologic Mechanisms	Nanosymposium		SDCC 33	7 Wed	1–3:15 p.m.	
714 Alzheimer's Disease and Other Dementias: Tau: Experimental Models	Nanosymposium		SDCC 5	7 Wed	1–3 p.m.	
715 ALS Mechanisms	Nanosymposium		SDCC 7	7 Wed	1–3:45 p.m.	
716 Brain Injury: From Animal Models to Physiology, Behavior, and Treatments	Nanosymposium		SDCC 4	7 Wed	1–4 p.m.	
736 Alzheimer's Disease and Other Dementias: Neuroinflammation	Poster	E47–F25	SDCC Halls B–H	7 Wed	1–5 p.m.	

GENERAL INFORMATION PROGRAM | List of Sessions by Theme and Day

SESSION # / SESSION TITLE	SESSION TYPE	POSTER BOARD #	LOCATION	DATE	TIME	CME HOURS
737 Alzheimer's Disease and Other Dementias: Neuroinflammation and Immune Actions	Poster	F26-H17	SDCC Halls B-H	7 Wed	1-5 p.m.	
738 Mechanisms of Synaptic Dysfunction in Alzheimer's Disease	Poster	H18-J2	SDCC Halls B-H	7 Wed	1-5 p.m.	
739 Alzheimer's Disease and Other Dementias: Mechanisms of Synaptic Dysfunction in Alzheimer's Disease	Poster	J3-K15	SDCC Halls B-H	7 Wed	1-5 p.m.	
740 Alzheimer's Disease and Other Dementias: Mechanisms of Synaptic Dysfunction in Alzheimer's Disease	Poster	K16-L17	SDCC Halls B-H	7 Wed	1-5 p.m.	
741 Alzheimer's Disease and Other Dementias: Clinical and Pre-Clinical Imaging Studies in Alzheimer's Disease	Poster	L18-N6	SDCC Halls B-H	7 Wed	1-5 p.m.	
742 Alzheimer's Disease and Other Dementias: APP and Metabolites: Function and Processing	Poster	N7-O10	SDCC Halls B-H	7 Wed	1-5 p.m.	
743 Alzheimer's Disease and Other Dementias: Abeta Mechanisms of Toxicity II	Poster	O11-Q8	SDCC Halls B-H	7 Wed	1-5 p.m.	
744 Alzheimer's Disease and Other Dementias: APP/Abeta: Animal and Cellular Models III	Poster	Q9-R16	SDCC Halls B-H	7 Wed	1-5 p.m.	
745 Alzheimer's Disease and Other Dementias: Abeta as a Therapeutic Target	Poster	R17-S13	SDCC Halls B-H	7 Wed	1-5 p.m.	
746 Alzheimer's Disease and Other Dementias: ApoE and Associated Pathways	Poster	S14-T6	SDCC Halls B-H	7 Wed	1-5 p.m.	
747 Alzheimer's Disease and Other Dementias: Other Dementias	Poster	T7-U2	SDCC Halls B-H	7 Wed	1-5 p.m.	
748 Parkinson's Disease: Mitochondrial Mechanisms and Genetics	Poster	U3-V4	SDCC Halls B-H	7 Wed	1-5 p.m.	
749 Parkinson's Disease: Alpha-Synuclein: Models	Poster	V5-W14	SDCC Halls B-H	7 Wed	1-5 p.m.	
750 Parkinson's Disease: Alpha-Synuclein: Mechanisms and Transmission	Poster	W15-Y10	SDCC Halls B-H	7 Wed	1-5 p.m.	
751 Parkinson's Disease: Circuit Mechanisms	Poster	Y11-Z11	SDCC Halls B-H	7 Wed	1-5 p.m.	
752 Parkinson's Disease: Neuroprotection	Poster	Z12-AA10	SDCC Halls B-H	7 Wed	1-5 p.m.	
753 Parkinson's Disease: Neuroprotective Mechanisms	Poster	AA11-CC6	SDCC Halls B-H	7 Wed	1-5 p.m.	
754 Parkinson's Disease: Symptoms and Emerging Therapeutic Avenues	Poster	CC7-DD2	SDCC Halls B-H	7 Wed	1-5 p.m.	
755 Parkinson's Disease: Preclinical Animal Studies: Cellular and Molecular II	Poster	DD3-EE7	SDCC Halls B-H	7 Wed	1-5 p.m.	
756 Parkinson's Disease: Preclinical Animal Studies: Stimulation and Physiology	Poster	EE8-FF15	SDCC Halls B-H	7 Wed	1-5 p.m.	
757 Huntington's Disease: Molecular Mechanisms II	Poster	FF16-HH1	SDCC Halls B-H	7 Wed	1-5 p.m.	
758 Huntington's Disease: Animal Models and Clinical Trials	Poster	HH2-II13	SDCC Halls B-H	7 Wed	1-5 p.m.	
759 Gulf War Illness: Mechanisms, Causes, and Interventions	Poster	II14-KK12	SDCC Halls B-H	7 Wed	1-5 p.m.	
760 Neurotoxicity, Inflammation, and Neuroprotection: Mechanisms of Neurotoxicity II	Poster	LL1-MM9	SDCC Halls B-H	7 Wed	1-5 p.m.	
761 Neurotoxicity, Inflammation, and Neuroprotection: Neuroprotective Mechanisms: Preclinical	Poster	MM10-NN5	SDCC Halls B-H	7 Wed	1-5 p.m.	
762 Neurotoxicity, Inflammation, and Neuroprotection: Neuroinflammation: Beyond Microglia	Poster	NN6-PP10	SDCC Halls B-H	7 Wed	1-5 p.m.	
763 Brain Injury and Trauma: Brain: Pre-Clinical Therapeutic Strategies	Poster	PP11-PP21	SDCC Halls B-H	7 Wed	1-5 p.m.	
Theme D: Sensory Systems						
005 How to Get Out of Harm's Way: New Insight Across Multiple Species Into the Neural Mechanisms of Visually Guided Collision Avoidance	Minisymposium		SDCC 6E	3 Sat	1:30-4 p.m.	2.5
016 Somatosensation: Cortical Mechanisms	Nanosymposium		SDCC 23	3 Sat	1-2:45 p.m.	
017 Vision: Representation of Objects and Scenes	Nanosymposium		SDCC 32	3 Sat	1-2:45 p.m.	
057 Somatosensation: Trigeminal Processing	Poster	EE4-EE14	SDCC Halls B-H	3 Sat	1-5 p.m.	
058 Somatosensation: Pain: Headache and Migraine	Poster	FF1-FF12	SDCC Halls B-H	3 Sat	1-5 p.m.	
059 Subcortical Visual Pathways	Poster	FF13-HH6	SDCC Halls B-H	3 Sat	1-5 p.m.	
060 Visual Categorization and Learning	Poster	HH7-HH16	SDCC Halls B-H	3 Sat	1-5 p.m.	
061 Eye Movements and Perception	Poster	HH17-KK1	SDCC Halls B-H	3 Sat	1-5 p.m.	

GENERAL INFORMATION PROGRAM | List of Sessions by Theme and Day

SESSION # / SESSION TITLE	SESSION TYPE	POSTER BOARD #	LOCATION	DATE	TIME	CME HOURS
101 Sensorimotor Circuits for Social Communication	Lecture		SDCC Ballroom 20	4 Sun	11:30 a.m.–12:40 p.m.	1.25
105 Vision: Visual Cortex: Functional Architecture and Circuits	Nanosymposium		SDCC 23	4 Sun	8–10:30 a.m.	
106 Vision: Representation of Faces and Bodies	Nanosymposium		SDCC 24	4 Sun	8–10:45 a.m.	
139 Olfaction: Olfactory Sensory Neuron Development and Function	Poster	Y2–Y18	SDCC Halls B–H	4 Sun	8 a.m.–noon	
140 Auditory Processing: Vocalizations and Natural Sounds	Poster	Z1–AA3	SDCC Halls B–H	4 Sun	8 a.m.–noon	
141 Vision: Visual Cortex: Circuits and Populations	Poster	AA4–CC5	SDCC Halls B–H	4 Sun	8 a.m.–noon	
142 Vision: Visual System: Response Modulation and Adaptation	Poster	CC6–DD18	SDCC Halls B–H	4 Sun	8 a.m.–noon	
143 Striate Cortex: Plasticity	Poster	EE1–FF7	SDCC Halls B–H	4 Sun	8 a.m.–noon	
144 Visual Motion I	Poster	FF8–GG9	SDCC Halls B–H	4 Sun	8 a.m.–noon	
145 Vision: Spatial and Feature-Based Attention	Poster	GG10–II4	SDCC Halls B–H	4 Sun	8 a.m.–noon	
191 Auditory Processing: Adaptation, Learning, and Memory	Nanosymposium		SDCC 24	4 Sun	1–2:30 p.m.	
214 The Role of TRP Channels in Pain and Itch	Poster	U11–V15	SDCC Halls B–H	4 Sun	1–5 p.m.	
215 Pain: Thalamic and Cortical Processing	Poster	V16–W14	SDCC Halls B–H	4 Sun	1–5 p.m.	
216 Treatments for Persistent Pain	Poster	W15–Y10	SDCC Halls B–H	4 Sun	1–5 p.m.	
217 Olfaction: Second Order Regions: Olfactory Bulb and Antennal Lobe	Poster	Y11–Z18	SDCC Halls B–H	4 Sun	1–5 p.m.	
218 Taste	Poster	AA1–BB8	SDCC Halls B–H	4 Sun	1–5 p.m.	
219 Visual Cortex: Functional Architecture and Circuits I	Poster	BB9–DD13	SDCC Halls B–H	4 Sun	1–5 p.m.	
221 Vision: Representation of Objects and Scenes	Poster	DD14–FF8	SDCC Halls B–H	4 Sun	1–5 p.m.	
222 Visual Sensory-Motor Processing: Visually-Guided Reaching and Related Behaviors	Poster	FF9–GG9	SDCC Halls B–H	4 Sun	1–5 p.m.	
223 Multisensory Integration: Cross-Modal Processing: Spatial and Temporal Factors	Poster	GG10–HH12	SDCC Halls B–H	4 Sun	1–5 p.m.	
261 Algorithms for Olfactory Search Across Species	Minisymposium		SDCC 28A	5 Mon	8:30–11 a.m.	2.5
270 Vision and Eye Movements	Nanosymposium		SDCC 4	5 Mon	8–10:15 a.m.	
299 Nociceptors	Poster	W14–Y11	SDCC Halls B–H	5 Mon	8 a.m.–noon	
300 Pain Models: Behavior	Poster	Y12–Z14	SDCC Halls B–H	5 Mon	8 a.m.–noon	
301 Pain Models: Physiology	Poster	Z15–BB4	SDCC Halls B–H	5 Mon	8 a.m.–noon	
302 Inflammatory Pain	Poster	BB5–F26	SDCC Halls B–H	5 Mon	8 a.m.–noon	
303 Somatosensation: Central Mechanisms of Neuropathic Pain	Poster	DD1–EE2	SDCC Halls B–H	5 Mon	8 a.m.–noon	
304 Visceral and Musculoskeletal Pain	Poster	EE3–EE13	SDCC Halls B–H	5 Mon	8 a.m.–noon	
305 Olfaction: Information Processing in Higher Order Circuits	Poster	EE14–GG1	SDCC Halls B–H	5 Mon	8 a.m.–noon	
306 Visual Cortex: Circuits and Populations I	Poster	GG2–HH13	SDCC Halls B–H	5 Mon	8 a.m.–noon	
307 Vision: Representation of Faces and Bodies	Poster	HH14–JJ1	SDCC Halls B–H	5 Mon	8 a.m.–noon	
349 Multidimensional Neuronal Cell Type Classification in the Cerebral Cortex	Minisymposium		SDCC 29D	5 Mon	1:30–4 p.m.	2.5
388 Molecular and Cellular Mechanisms of Itch and Touch Sensation	Poster	V3–W3	SDCC Halls B–H	5 Mon	1–5 p.m.	
389 Central Mechanisms of Pain	Poster	W4–X6	SDCC Halls B–H	5 Mon	1–5 p.m.	
390 Pain: Descending Modulation	Poster	X7–Y10	SDCC Halls B–H	5 Mon	1–5 p.m.	
391 Pain Imaging and Perception	Poster	Y11–AA2	SDCC Halls B–H	5 Mon	1–5 p.m.	
392 Somatosensation: Thalamic and Cortical Processing	Poster	AA3–BB13	SDCC Halls B–H	5 Mon	1–5 p.m.	
393 Auditory Processing: Sound Localization and Binaural Interactions	Poster	BB14–CC8	SDCC Halls B–H	5 Mon	1–5 p.m.	
394 Auditory Processing: Temporal, Frequency, and Spectral Processing	Poster	CC9–EE4	SDCC Halls B–H	5 Mon	1–5 p.m.	

GENERAL INFORMATION PROGRAM | List of Sessions by Theme and Day

SESSION # / SESSION TITLE	SESSION TYPE	POSTER BOARD #	LOCATION	DATE	TIME	CME HOURS
395 Retinal Circuitry	Poster	EE5–GG1	SDCC Halls B–H	5 Mon	1–5 p.m.	
396 Visual Cortical Streams: Rodentia, Primate, and Carnivora	Poster	GG2–GG11	SDCC Halls B–H	5 Mon	1–5 p.m.	
397 Vision: Extrastriate Cortex	Poster	GG12–HH12	SDCC Halls B–H	5 Mon	1–5 p.m.	
435 The Feeling Within: Molecules to Behavior Underlying Interoception	Symposium		SDCC 6B	6 Tue	8:30–11 a.m.	2.5
450 Vision: Contrast, Form, and Color	Nanosymposium		SDCC 33	6 Tue	8–10:30 a.m.	
478 Pain: Opioid Receptor Pharmacology and Signaling Mechanisms	Poster	Y14–Z10	SDCC Halls B–H	6 Tue	8 a.m.–noon	
479 Pain: Non-Opioid Analgesics	Poster	Z11–AA6	SDCC Halls B–H	6 Tue	8 a.m.–noon	
480 Touch: Barrel Cortex I	Poster	AA7–BB10	SDCC Halls B–H	6 Tue	8 a.m.–noon	
481 Olfaction: Perception and Behavior	Poster	BB11–DD5	SDCC Halls B–H	6 Tue	8 a.m.–noon	
482 Auditory and Vestibular Systems: Hair Cells and the Periphery	Poster	DD6–EE7	SDCC Halls B–H	6 Tue	8 a.m.–noon	
483 Auditory Processing: Perception, Cognition, and Action	Poster	EE8–FF16	SDCC Halls B–H	6 Tue	8 a.m.–noon	
484 Visual Cortex: Circuits and Populations II	Poster	FF17–GG14	SDCC Halls B–H	6 Tue	8 a.m.–noon	
485 Visual Cortex: Circuits and Populations III	Poster	GG15–HH4	SDCC Halls B–H	6 Tue	8 a.m.–noon	
486 Visual Cognition: Decision Making I	Poster	HH5–HH17	SDCC Halls B–H	6 Tue	8 a.m.–noon	
487 Visual Sensory-Motor Processing I	Poster	II1–II12	SDCC Halls B–H	6 Tue	8 a.m.–noon	
488 Visual Sensory-Motor Processing II	Poster	II13–KK7	SDCC Halls B–H	6 Tue	8 a.m.–noon	
489 Multisensory Integration: Cross-Modal Processing in Humans I	Poster	KK8–LL8	SDCC Halls B–H	6 Tue	8 a.m.–noon	
543 Somatosensation: Peripheral Mechanisms and Spinal Circuits	Nanosymposium		SDCC 5	6 Tue	1–4 p.m.	
570 Sensory Disorders: Visual and Auditory	Poster	T17–U9	SDCC Halls B–H	6 Tue	1–5 p.m.	
571 Pain Models: Pharmacology	Poster	U10–W7	SDCC Halls B–H	6 Tue	1–5 p.m.	
572 Peripheral Mechanisms of Persistent Pain	Poster	W8–X6	SDCC Halls B–H	6 Tue	1–5 p.m.	
573 Auditory Processing: Circuits, Synapses, and Neurotransmitters	Poster	X7–Z4	SDCC Halls B–H	6 Tue	1–5 p.m.	
574 Auditory Processing: Adaptation, Learning, and Memory	Poster	Z5–BB4	SDCC Halls B–H	6 Tue	1–5 p.m.	
575 Auditory Processing: Perception, Cognition, and Action II	Poster	BB5–CC7	SDCC Halls B–H	6 Tue	1–5 p.m.	
576 Vestibular Physiology and Anatomy	Poster	CC8–DD15	SDCC Halls B–H	6 Tue	1–5 p.m.	
577 Vision: Retina: Photoreceptors	Poster	DD16–EE9	SDCC Halls B–H	6 Tue	1–5 p.m.	
578 Visual System: Responses During Behavior	Poster	EE10–GG1	SDCC Halls B–H	6 Tue	1–5 p.m.	
579 Visual Cortex: Functional Architecture and Circuits II	Poster	GG2–HH10	SDCC Halls B–H	6 Tue	1–5 p.m.	
580 Vision: Processing of Contrast, Form, and Color	Poster	HH11–II17	SDCC Halls B–H	6 Tue	1–5 p.m.	
581 Multisensory Integration and Cross-Modal Processing	Poster	II8–JJ5	SDCC Halls B–H	6 Tue	1–5 p.m.	
582 Multisensory Integration: Cross-Modal Processing in Humans II	Poster	JJ6–LL5	SDCC Halls B–H	6 Tue	1–5 p.m.	
618 Novel Molecular Targets for the Treatment of Pain	Minisymposium		SDCC 6E	7 Wed	8:30–11 a.m.	2.5
622 A Genetic Roadmap to Understanding Auditory Perception Mechanisms	Lecture		SDCC Ballroom 20	7 Wed	10–11:10 a.m.	1.25
630 The Chemical Senses : Dynamics and Plasticity of Olfactory and Gustatory Coding	Nanosymposium		SDCC 23	7 Wed	8–10:45 a.m.	
666 Peripheral Mechanisms of Neuropathic Pain	Poster	DD3–EE13	SDCC Halls B–H	7 Wed	8 a.m.–noon	
667 Touch: Barrel Cortex II	Poster	EE14–GG1	SDCC Halls B–H	7 Wed	8 a.m.–noon	
668 Touch and Proprioception	Poster	GG2–HH6	SDCC Halls B–H	7 Wed	8 a.m.–noon	
669 Visual Pathways: To and From the Cortex	Poster	HH7–II8	SDCC Halls B–H	7 Wed	8 a.m.–noon	

GENERAL INFORMATION PROGRAM | List of Sessions by Theme and Day

SESSION # / SESSION TITLE	SESSION TYPE	POSTER BOARD #	LOCATION	DATE	TIME	CME HOURS
704 Light Detection in the Eye: The Big Picture	Lecture		SDCC Ballroom 20	7 Wed	1–2:10 p.m.	1.25
717 Pain Imaging and Perception	Nanosymposium		SDCC 30E	7 Wed	1–3 p.m.	
718 Vestibular Systems: VOR, Locomotion, and Gaze	Nanosymposium		SDCC 2	7 Wed	1–2:45 p.m.	
719 Vision: Extrastriate Cortex	Nanosymposium		SDCC 23	7 Wed	1–3 p.m.	
764 Touch: Plasticity and Reorganization	Poster	PP22–QQ10	SDCC Halls B–H	7 Wed	1–5 p.m.	
765 Touch: Central Representation of Stimulus Features	Poster	QQ11–QQ24	SDCC Halls B–H	7 Wed	1–5 p.m.	
766 Auditory Processing: Neural Coding, Experiment, and Theory	Poster	QQ25–SS14	SDCC Halls B–H	7 Wed	1–5 p.m.	
767 Visual Cognition: Decision Making II	Poster	TT1–TT22	SDCC Halls B–H	7 Wed	1–5 p.m.	
Theme E: Motor Systems						
006 Latent Factors and Dynamics in Motor Cortex and Their Application to Brain-Machine Interfaces	Minisymposium		SDCC 28A	3 Sat	1:30–4 p.m.	2.5
062 Posture and Gait: Aging, Injury, and Disease I	Poster	KK2–KK12	SDCC Halls B–H	3 Sat	1–5 p.m.	
063 Posture and Gait: Aging, Injury, and Disease II	Poster	LL1–MM7	SDCC Halls B–H	3 Sat	1–5 p.m.	
064 CPG Modulation	Poster	MM8–NN3	SDCC Halls B–H	3 Sat	1–5 p.m.	
065 Rhythmic Motor Pattern Generation: Afferent and Descending Control	Poster	NN4–002	SDCC Halls B–H	3 Sat	1–5 p.m.	
092 Bidirectional Interactions Between the Brain and Implantable Computers	Lecture		SDCC Ballroom 20	4 Sun	8:30–9:40 a.m.	1.25
096 The Dynamic Interaction of Vision and Eye Movements	Minisymposium		SDCC 6E	4 Sun	8:30–11 a.m.	2.5
107 Voluntary Movements	Nanosymposium		SDCC 25	4 Sun	8–10:30 a.m.	
146 Cellular Physiology in the Basal Ganglia: Novel Cell Types and Mechanisms	Poster	II5–KK4	SDCC Halls B–H	4 Sun	8 a.m.–noon	
147 Basal Ganglia Systems in Motivated Behaviors	Poster	KK5–MM3	SDCC Halls B–H	4 Sun	8 a.m.–noon	
148 Brain-Machine Interface: Neurophysiology: Non-Invasive Techniques: Ultrasound and Other	Poster	MM4–NN3	SDCC Halls B–H	4 Sun	8 a.m.–noon	
149 Posture and Gait: Kinematics, Muscle Activity, Exercise and Fatigue, and Biomechanics I	Poster	NN3–0010	SDCC Halls B–H	4 Sun	8 a.m.–noon	
150 Posture and Gait: Afferent Control	Poster	O011–PP3	SDCC Halls B–H	4 Sun	8 a.m.–noon	
151 Rhythmic Motor Pattern Generation: Connectivity	Poster	PP4–PP20	SDCC Halls B–H	4 Sun	8 a.m.–noon	
180 More Than Just a "Motor": Recent Surprises From the Frontal Cortex	Minisymposium		SDCC 28A	4 Sun	1:30–4 p.m.	2.5
224 Voluntary Movements: Interlimb and Bimanual Control	Poster	HH13–II8	SDCC Halls B–H	4 Sun	1–5 p.m.	
225 Brain-Machine Interface: Neurophysiology and Methods Development	Poster	II9–KK12	SDCC Halls B–H	4 Sun	1–5 p.m.	
226 Brain-Machine Interface: Vision-Related	Poster	LL1–LL10	SDCC Halls B–H	4 Sun	1–5 p.m.	
258 Targeted Therapies for Parkinson's Disease: From Genetics to the Clinic	Symposium		SDCC 6B	5 Mon	8:30–11 a.m.	2.5
271 Brain-Machine Interface	Nanosymposium		SDCC 7	5 Mon	8–11:30 a.m.	
308 Voluntary Movements: Reaching Control: Motor Learning: Human I	Poster	JJ2–LL8	SDCC Halls B–H	5 Mon	8 a.m.–noon	
309 Voluntary Movements: Reaching Control: Motor Learning: Human II	Poster	LL9–NN5	SDCC Halls B–H	5 Mon	8 a.m.–noon	
310 Voluntary Movements: Cortical Planning and Execution: Neurophysiology: Animal I	Poster	NN6–003	SDCC Halls B–H	5 Mon	8 a.m.–noon	
311 Voluntary Movements: Cortical Planning and Execution: Neuroimaging	Poster	O04–PP4	SDCC Halls B–H	5 Mon	8 a.m.–noon	
312 Brain-Machine Interface: Reaching Movements	Poster	PP5–QQ3	SDCC Halls B–H	5 Mon	8 a.m.–noon	
313 Rhythmic Motor Pattern Generation: Stability and Variability	Poster	QQ4–QQ16	SDCC Halls B–H	5 Mon	8 a.m.–noon	
357 Cerebellum: Local and Long-Range Functions	Nanosymposium		SDCC 4	5 Mon	1–3:45 p.m.	
398 Eye Movements: Central Mechanism in Animal Models	Poster	HH13–JJ3	SDCC Halls B–H	5 Mon	1–5 p.m.	
399 Eye Movements: Saccade Behavior and Psychophysics in Humans	Poster	JJ4–LL7	SDCC Halls B–H	5 Mon	1–5 p.m.	

GENERAL INFORMATION PROGRAM | List of Sessions by Theme and Day

SESSION # / SESSION TITLE	SESSION TYPE	POSTER BOARD #	LOCATION	DATE	TIME	CME HOURS
400 Voluntary Movements: Reaching Control: Action and Sensation	Poster	LL8–MM5	SDCC Halls B–H	5 Mon	1–5 p.m.	
401 Voluntary Movements: Reaching Control: Movement Selection and Strategy	Poster	MM6–NN14	SDCC Halls B–H	5 Mon	1–5 p.m.	
402 Voluntary Movements: Plasticity	Poster	NN15–PP8	SDCC Halls B–H	5 Mon	1–5 p.m.	
403 Brain-Machine Interface: Grasp	Poster	PP9–QQ1	SDCC Halls B–H	5 Mon	1–5 p.m.	
404 Brain-Machine Interface: Somatosensory	Poster	QQ2–QQ12	SDCC Halls B–H	5 Mon	1–5 p.m.	
405 Sensory Input to Respiratory Control	Poster	QQ13–QQ26	SDCC Halls B–H	5 Mon	1–5 p.m.	
440 Neuroprosthetic Devices: A Patient’s Perspective on Brain Computer Interfaces	Basic-Translational-Clinical Roundtables		SDCC 10	6 Tue	8:30–11 a.m.	2.5
451 Respiration Control	Nanosymposium		SDCC 23	6 Tue	8–9:30 a.m.	
490 Cerebellum: Plasticity and Climbing Fibers	Poster	LL9–MM12	SDCC Halls B–H	6 Tue	8 a.m.–noon	
491 Basal Ganglia Systems in Acquired Behaviors	Poster	MM13–NN15	SDCC Halls B–H	6 Tue	8 a.m.–noon	
492 Voluntary Movements: Finger and Grasp Control: Age, Pathology, and Physiology	Poster	NN16–OO12	SDCC Halls B–H	6 Tue	8 a.m.–noon	
493 Voluntary Movements: Reaching Control: Motor Learning: Animal	Poster	OO13–PP13	SDCC Halls B–H	6 Tue	8 a.m.–noon	
494 Posture and Gait: Kinematics, Muscle Activity, Exercise and Fatigue, and Biomechanics II	Poster	PP14–QQ14	SDCC Halls B–H	6 Tue	8 a.m.–noon	
495 Posture and Gait: Higher Order Control, Multi-Task Integration, and Theory	Poster	QQ15–SS1	SDCC Halls B–H	6 Tue	8 a.m.–noon	
496 Rhythmic Motor Pattern Generation: Speed and Phasing	Poster	SS2–SS11	SDCC Halls B–H	6 Tue	8 a.m.–noon	
497 Motor Neurons and Muscle: Activity, Sensory, and Central Control: Exercise, Injury, and Disease I	Poster	SS12–TT17	SDCC Halls B–H	6 Tue	8 a.m.–noon	
498 Motor Neurons: Development and Disease	Poster	TT18–UU5	SDCC Halls B–H	6 Tue	8 a.m.–noon	
583 Cerebellum: Cortex and Nuclei I	Poster	LL6–NN1	SDCC Halls B–H	6 Tue	1–5 p.m.	
584 Cerebellum: Cortex and Nuclei II	Poster	NN2–OO7	SDCC Halls B–H	6 Tue	1–5 p.m.	
585 Voluntary Movements: Cortical Planning and Execution: Behavior	Poster	OO8–PP16	SDCC Halls B–H	6 Tue	1–5 p.m.	
586 Voluntary Movements: Cortical Planning and Execution: Neurophysiology: Human	Poster	PP17–QQ12	SDCC Halls B–H	6 Tue	1–5 p.m.	
587 Voluntary Movements: Cortical Planning and Execution: Neurophysiology: Animal II	Poster	QQ13–RR14	SDCC Halls B–H	6 Tue	1–5 p.m.	
588 Vocal and Oral Control Mechanisms From Song to Speech	Poster	SS1–TT10	SDCC Halls B–H	6 Tue	1–5 p.m.	
589 Novel Electrode Designs, CNS, and Periphery	Poster	TT11–UU7	SDCC Halls B–H	6 Tue	1–5 p.m.	
590 Brain-Machine: Speech and Other Motor Systems	Poster	UU8–VV3	SDCC Halls B–H	6 Tue	1–5 p.m.	
621 Cortical Control of Locomotion and Posture	Minisymposium		SDCC 31C	7 Wed	8:30–11 a.m.	2.5
670 Observing and Altering Basal Ganglia Activity From Mouse to Human	Poster	II9–KK5	SDCC Halls B–H	7 Wed	8 a.m.–noon	
671 Voluntary Movements: Finger and Grasp Control: Normal Human Behavior	Poster	KK6–LL14	SDCC Halls B–H	7 Wed	8 a.m.–noon	
672 Brain-Machine: Technical Development and Theory	Poster	MM1–NN9	SDCC Halls B–H	7 Wed	8 a.m.–noon	
673 Posture and Gait: Reflexes and Reflex Modulation	Poster	NN10–OO11	SDCC Halls B–H	7 Wed	8 a.m.–noon	
674 Motor Control and Modulation of Respiration	Poster	OO12–PP10	SDCC Halls B–H	7 Wed	8 a.m.–noon	
675 Motor Neurons and Muscle: Motorneuron-Muscle Interface and Muscle Physiology/Biochemistry	Poster	PP11–QQ9	SDCC Halls B–H	7 Wed	8 a.m.–noon	
708 The Basal Ganglia: Beyond Action Selection	Minisymposium		SDCC 6E	7 Wed	1:30–4 p.m.	2.5
720 Neural Activity Patterns for Speech and Sign Language in Disease and Health	Nanosymposium		SDCC 30B	7 Wed	1–3 p.m.	
768 Cerebellum: Human Studies	Poster	TT23–UU9	SDCC Halls B–H	7 Wed	1–5 p.m.	
769 Histologic Responses to Electrode Insertion	Poster	UU10–UU21	SDCC Halls B–H	7 Wed	1–5 p.m.	
770 Spinal Prosthetics and Stimulation	Poster	UU22–VV11	SDCC Halls B–H	7 Wed	1–5 p.m.	
771 Motor Neurons and Muscle: Activity, Sensory, and Central Control: Exercise, Injury, and Disease II	Poster	VV12–WW7	SDCC Halls B–H	7 Wed	1–5 p.m.	

GENERAL INFORMATION PROGRAM | List of Sessions by Theme and Day

SESSION # / SESSION TITLE	SESSION TYPE	POSTER BOARD #	LOCATION	DATE	TIME	CME HOURS
772 Motor Neurons and Muscle: Motor Unit Recordings, Kinematics, and EMG	Poster	WW8–XX8	SDCC Halls B–H	7 Wed	1–5 p.m.	
Theme F: Integrative Physiology and Behavior						
004 Neuronal Mechanisms for Prepulse Inhibition: Comparative Approaches From Sensory to Cognition	Minisymposium		SDCC 6C	3 Sat	1:30–4 p.m.	2.5
018 Timely Insights in Circadian Regulation	Nanosymposium		SDCC 4	3 Sat	1–3:45 p.m.	
066 Neuroendocrinology of Sexual Behavior	Poster	003–PP13	SDCC Halls B–H	3 Sat	1–5 p.m.	
067 Stress-Modulated Pathways, Neuromodulators, and Behavior	Poster	PP14–QQ10	SDCC Halls B–H	3 Sat	1–5 p.m.	
068 Brain Blood Flow, Metabolism, and Homeostasis: Energy Metabolism	Poster	QQ11–RR6	SDCC Halls B–H	3 Sat	1–5 p.m.	
069 Recent Advances in Cardiovascular Regulation	Poster	RR7–SS7	SDCC Halls B–H	3 Sat	1–5 p.m.	
070 Cardiovascular Regulation: New Insights	Poster	SS8–TT10	SDCC Halls B–H	3 Sat	1–5 p.m.	
071 Thermoregulation: Cool News and Hot Topics	Poster	TT11–TT18	SDCC Halls B–H	3 Sat	1–5 p.m.	
093 Multiscale Computer Modeling of Neural Circuits in Health and Disease	Symposium		SDCC 6A	4 Sun	8:30–11 a.m.	2.5
108 Behavioral Neuroendocrinology: Hormones and Cognition	Nanosymposium		SDCC 5	4 Sun	8–10 a.m.	
152 Neuroethology: Sensory and Motor Systems	Poster	PP21–QQ22	SDCC Halls B–H	4 Sun	8 a.m.–noon	
153 Neuroendocrinology of Social Behavior	Poster	QQ23–SS11	SDCC Halls B–H	4 Sun	8 a.m.–noon	
154 Neuroendocrine Processes: Sexual Differentiation	Poster	SS12–TT16	SDCC Halls B–H	4 Sun	8 a.m.–noon	
155 Stress and the Hypothalamus, Amygdala, and Bed Nucleus	Poster	TT17–UU13	SDCC Halls B–H	4 Sun	8 a.m.–noon	
156 Stress-Modulated Pathways: Hypothalamus, Amygdala, and Bed Nucleus	Poster	UU14–VV9	SDCC Halls B–H	4 Sun	8 a.m.–noon	
177 Blood-Brain Barrier in Health and Disease: Role in Neurodegeneration, CNS Autoimmunity, and Gene Transfer	Symposium		SDCC 6B	4 Sun	1:30–4 p.m.	2.5
192 Sleep: Hot Topics	Nanosymposium		SDCC 7	4 Sun	1–4 p.m.	
227 Stress and Cognition	Poster	LL11–NN13	SDCC Halls B–H	4 Sun	1–5 p.m.	
228 Autonomic Regulation: Gastrointestinal, Renal/Urinary, and Reproductive Regulation	Poster	NN14–PP5	SDCC Halls B–H	4 Sun	1–5 p.m.	
259 Defining Dysbiosis in Disorders of Movement and Motivation	Minisymposium		SDCC 6C	5 Mon	8:30–11 a.m.	2.5
314 Behavioral Neuroendocrinology: Hormones and Cognition I	Poster	QQ17–RR10	SDCC Halls B–H	5 Mon	8 a.m.–noon	
315 Stress and the Brain: Cellular Actions	Poster	RR11–SS12	SDCC Halls B–H	5 Mon	8 a.m.–noon	
316 Stress-Modulated Pathways: Cortex and Striatum	Poster	SS13–TT19	SDCC Halls B–H	5 Mon	8 a.m.–noon	
317 Stress-Modulated Pathways: Hippocampus	Poster	TT20–UU18	SDCC Halls B–H	5 Mon	8 a.m.–noon	
318 Brain Blood Flow	Poster	UU19–WW1	SDCC Halls B–H	5 Mon	8 a.m.–noon	
319 Food Intake and Energy Balance: Integration of Peripheral Signals	Poster	WW2–YY2	SDCC Halls B–H	5 Mon	8 a.m.–noon	
346 Sex Differences in Risk and Resilience: Stress Effects on the Neural Substrates of Emotion and Motivation	Minisymposium		SDCC 6C	5 Mon	1:30–4 p.m.	2.5
406 Advances in the Neural Basis of Birdsong	Poster	RR1–TT2	SDCC Halls B–H	5 Mon	1–5 p.m.	
407 Social Communication in Non-Avian Species	Poster	TT3–UU1	SDCC Halls B–H	5 Mon	1–5 p.m.	
408 Stress and the Brain: Neuroimmunology	Poster	UU2–VV4	SDCC Halls B–H	5 Mon	1–5 p.m.	
409 Biological Rhythms and Sleep: Entrainment and Phase Shifts	Poster	VV5–WW2	SDCC Halls B–H	5 Mon	1–5 p.m.	
410 Molecular Biology and Physiology of Clocks	Poster	WW3–XX9	SDCC Halls B–H	5 Mon	1–5 p.m.	
411 Sleep: Molecules Cells and Drugs	Poster	XX10–YY18	SDCC Halls B–H	5 Mon	1–5 p.m.	
441 The Genetics, Neurobiology, and Evolution of Natural Behavior	Lecture		SDCC Ballroom 20	6 Tue	10–11:10 a.m.	1.25
452 Brain Blood Flow and Blood Brain Barrier	Nanosymposium		SDCC 30E	6 Tue	8–10:30 a.m.	
499 Neurophysiologic Effects of Early-Life Stress	Poster	UU6–VV5	SDCC Halls B–H	6 Tue	8 a.m.–noon	

GENERAL INFORMATION PROGRAM | List of Sessions by Theme and Day

SESSION # / SESSION TITLE	SESSION TYPE	POSTER BOARD #	LOCATION	DATE	TIME	CME HOURS
500 Early-Life Stress: Molecular Mechanisms and Cellular Effects	Poster	VV6–WW2	SDCC Halls B–H	6 Tue	8 a.m.–noon	
501 Water and Salt Balance and Thirst	Poster	WW3–XX5	SDCC Halls B–H	6 Tue	8 a.m.–noon	
532 Neuropeptide Signaling: From Physiology to Behavior	Minisymposium		SDCC 6E	6 Tue	1:30–4 p.m.	2.5
544 Neuro-Oncology	Nanosymposium		SDCC 1	6 Tue	1–2:45 p.m.	
591 Behavioral Neuroendocrinology: Parental Behavior	Poster	VV4–VV18	SDCC Halls B–H	6 Tue	1–5 p.m.	
592 Behavioral Neuroendocrinology: Modulation of Defensive and Aggressive Behaviors	Poster	VV19–XX2	SDCC Halls B–H	6 Tue	1–5 p.m.	
593 Behavioral Neuroendocrinology: Hormones and Cognition II	Poster	XX3–YY15	SDCC Halls B–H	6 Tue	1–5 p.m.	
594 Neuroimmunology: Regulating Systems	Poster	YY16–ZZ20	SDCC Halls B–H	6 Tue	1–5 p.m.	
595 Neuroimmunology: Behavioral Effects	Poster	ZZ21–AAA15	SDCC Halls B–H	6 Tue	1–5 p.m.	
596 Biological Rhythms and Sleep: Regulators	Poster	AAA16–BBB8	SDCC Halls B–H	6 Tue	1–5 p.m.	
597 Biological Rhythms and Sleep: Systems	Poster	BBB9–DDD2	SDCC Halls B–H	6 Tue	1–5 p.m.	
598 Non-Peptide Regulation of Food Intake and Energy Balance	Poster	DDD3–DDD22	SDCC Halls B–H	6 Tue	1–5 p.m.	
615 Multiple Axes of Dopamine Systems for Behavioral Controls: From Fly Via Rodent to Monkey	Symposium		SDCC 6A	7 Wed	8:30–11 a.m.	2.5
676 Neuroethology: New Insights in Sensory and Motor Systems	Poster	QQ10–RR5	SDCC Halls B–H	7 Wed	8 a.m.–noon	
677 Brain Blood Flow, Metabolism, and Homeostasis: Blood Brain Barrier	Poster	RR6–TT2	SDCC Halls B–H	7 Wed	8 a.m.–noon	
678 Sleep Behavior	Poster	TT3–UU3	SDCC Halls B–H	7 Wed	8 a.m.–noon	
679 Biological Rhythms and Sleep: Behavior	Poster	UU4–VV7	SDCC Halls B–H	7 Wed	8 a.m.–noon	
680 Central Pathways Controlling Food Intake and Energy Balance	Poster	VV8–WW13	SDCC Halls B–H	7 Wed	8 a.m.–noon	
706 The Emerging Role of the Amygdala in Modulating the Somatosensory and Emotional Components of Pain and Itch	Symposium		SDCC 6B	7 Wed	1:30–4 p.m.	2.5
773 Neuroendocrine Processes: The HPG Axis	Poster	XX9–YY16	SDCC Halls B–H	7 Wed	1–5 p.m.	
774 Neuroendocrine Processes: Neuroendocrinology, Anatomy, and Physiology	Poster	YY17–ZZ19	SDCC Halls B–H	7 Wed	1–5 p.m.	
775 Early-Life Stress: Anxiety, Social Function, and Depression	Poster	ZZ20–AAA21	SDCC Halls B–H	7 Wed	1–5 p.m.	
776 Stress and the Brain: Adolescence	Poster	AAA22–BBB5	SDCC Halls B–H	7 Wed	1–5 p.m.	
777 Brain Blood Flow, Metabolism, and Homeostasis: Functional Imaging I	Poster	BBB6–CCC11	SDCC Halls B–H	7 Wed	1–5 p.m.	
778 Brain Blood Flow, Metabolism, and Homeostasis: Functional Imaging II	Poster	CCC12–DDD12	SDCC Halls B–H	7 Wed	1–5 p.m.	
779 Sleep Systems	Poster	DDD13–EEE9	SDCC Halls B–H	7 Wed	1–5 p.m.	
780 Recent Advances in Sleep Systems	Poster	EEE10–EEE22	SDCC Halls B–H	7 Wed	1–5 p.m.	
781 Neuropeptide Regulation of Food Intake and Energy Balance	Poster	EEE23–GGG1	SDCC Halls B–H	7 Wed	1–5 p.m.	
Theme G: Motivation and Emotion						
007 Neurocognitive Development of Motivated Behavior	Minisymposium		SDCC 29D	3 Sat	1:30–4 p.m.	2.5
072 Dopaminergic Reward Systems	Poster	TT19–VV2	SDCC Halls B–H	3 Sat	1–5 p.m.	
073 Motivation: Cortical Neurocircuitry	Poster	VV3–VV13	SDCC Halls B–H	3 Sat	1–5 p.m.	
074 Emotion: Human Emotion I	Poster	VV14–WW12	SDCC Halls B–H	3 Sat	1–5 p.m.	
075 Emotion: Neurocircuitry I	Poster	WW13–YY13	SDCC Halls B–H	3 Sat	1–5 p.m.	
076 Emotion: Neurocircuitry II	Poster	YY14–ZZ8	SDCC Halls B–H	3 Sat	1–5 p.m.	
077 Emotion: Fear, Anxiety, and Pain I	Poster	ZZ9–AAA12	SDCC Halls B–H	3 Sat	1–5 p.m.	
078 Emotion: Fear, Anxiety, and Pain II	Poster	AAA13–CCC12	SDCC Halls B–H	3 Sat	1–5 p.m.	
079 Behavioral Studies of Amphetamines	Poster	CCC3–DDD14	SDCC Halls B–H	3 Sat	1–5 p.m.	
080 Drugs of Abuse and Addiction: Cocaine Seeking and Reinstatement I	Poster	DDD15–EEE5	SDCC Halls B–H	3 Sat	1–5 p.m.	

GENERAL INFORMATION PROGRAM | List of Sessions by Theme and Day

SESSION # / SESSION TITLE	SESSION TYPE	POSTER BOARD #	LOCATION	DATE	TIME	CME HOURS
095 Computational Affective Neuroscience: Algorithms for Survival	Minisymposium		SDCC 6C	4 Sun	8:30–11 a.m.	2.5
109 Basal Ganglia Circuitry for Motivation and Reward	Nanosymposium		SDCC 2	4 Sun	8–11 a.m.	
110 Social Communication and Behavior	Nanosymposium		SDCC 1	4 Sun	8–10:45 a.m.	
157 Emotion: Human Emotion II	Poster	VV10–WW9	SDCC Halls B–H	4 Sun	8 a.m.–noon	
158 Emotion: Positive and Negative Emotional States	Poster	WW10–YY11	SDCC Halls B–H	4 Sun	8 a.m.–noon	
159 Drugs of Abuse and Addiction: Alcohol: Neural Mechanisms I	Poster	YY12–ZZ17	SDCC Halls B–H	4 Sun	8 a.m.–noon	
160 Neural Mechanisms of Amphetamine Addiction	Poster	ZZ18–AAA11	SDCC Halls B–H	4 Sun	8 a.m.–noon	
161 Molecular and Pharmacological Effects of Cocaine	Poster	AAA12–BBB7	SDCC Halls B–H	4 Sun	8 a.m.–noon	
229 Motivation: Social Communication and Behavior	Poster	PP6–QQ10	SDCC Halls B–H	4 Sun	1–5 p.m.	
230 Depression and Bipolar Disorders: Ketamine and Other Rapid Antidepressants I	Poster	QQ11–RR1	SDCC Halls B–H	4 Sun	1–5 p.m.	
231 Depression and Bipolar Disorders: Treatment and Drug Discovery	Poster	RR2–SS8	SDCC Halls B–H	4 Sun	1–5 p.m.	
232 Depression and Bipolar Disorders: Animal Models: Behavioral Mechanism I	Poster	SS9–TT15	SDCC Halls B–H	4 Sun	1–5 p.m.	
233 Depression and Bipolar Disorders: Animal Models: Neural Mechanisms	Poster	TT16–UU14	SDCC Halls B–H	4 Sun	1–5 p.m.	
234 Depression and Bipolar Disorders: Neural Mechanisms: Inflammation and Depression	Poster	UU15–VV6	SDCC Halls B–H	4 Sun	1–5 p.m.	
235 Drugs of Abuse and Addiction: Developmental Effects of Addictive Drugs	Poster	VV7–WW2	SDCC Halls B–H	4 Sun	1–5 p.m.	
236 Addictive Drugs: Reward Mechanisms, Tolerance, Dependence, and Toxicity	Poster	WW3–YY4	SDCC Halls B–H	4 Sun	1–5 p.m.	
237 Drugs of Abuse and Addiction: Learning and Circuitry	Poster	YY5–ZZ1	SDCC Halls B–H	4 Sun	1–5 p.m.	
260 Insular Cortex Neurocircuits: Relationships Among Function, Connectivity, and Drug and Alcohol Abuse	Minisymposium		SDCC 6E	5 Mon	8:30–11 a.m.	2.5
272 Cortical and Subcortical Mechanisms of Learning and Cognition	Nanosymposium		SDCC 2	5 Mon	8–11:30 a.m.	
320 Depression and Bipolar Disorders: Depression: Human Imaging and Behavioral Studies	Poster	YY3–ZZ3	SDCC Halls B–H	5 Mon	8 a.m.–noon	
321 Depression and Bipolar Disorders: Ketamine and Other Rapid Antidepressants II	Poster	ZZ4–ZZ20	SDCC Halls B–H	5 Mon	8 a.m.–noon	
322 Depression and Bipolar Disorders: Animal Models: Behavioral Mechanism II	Poster	ZZ21–AAA13	SDCC Halls B–H	5 Mon	8 a.m.–noon	
323 Depression and Bipolar Disorders: Animal Models of Therapeutics	Poster	AAA14–CCC3	SDCC Halls B–H	5 Mon	8 a.m.–noon	
347 Social Motivation Across the Lifespan	Minisymposium		SDCC 6E	5 Mon	1:30–4 p.m.	2.5
358 Emotion: Circuits and Mechanisms	Nanosymposium		SDCC 5	5 Mon	1–3 p.m.	
412 Appetitive and Incentive Learning and Memory I	Poster	YY19–ZZ10	SDCC Halls B–H	5 Mon	1–5 p.m.	
413 Fear and Aversive Learning and Memory: Acquisition	Poster	ZZ11–AAA3	SDCC Halls B–H	5 Mon	1–5 p.m.	
414 Fear and Aversive Learning and Memory: Modulation	Poster	AAA4–BBB5	SDCC Halls B–H	5 Mon	1–5 p.m.	
415 Fear and Aversive Learning and Memory: Extinction	Poster	BBB6–CCC9	SDCC Halls B–H	5 Mon	1–5 p.m.	
416 Reward Neurophysiology	Poster	CCC10–DDD24	SDCC Halls B–H	5 Mon	1–5 p.m.	
417 Drugs of Abuse and Addiction: Cocaine: Other Behavioral Studies	Poster	EEE1–FFF1	SDCC Halls B–H	5 Mon	1–5 p.m.	
418 Neural Mechanisms of Nicotine Addiction I	Poster	FFF2–FFF14	SDCC Halls B–H	5 Mon	1–5 p.m.	
419 Circuit and Molecular Mechanisms of Cocaine Action	Poster	FFF15–GGG16	SDCC Halls B–H	5 Mon	1–5 p.m.	
420 Drugs of Abuse and Addiction: Opioid Reinforcement, Seeking, and Reinstatement	Poster	GGG17–HHH11	SDCC Halls B–H	5 Mon	1–5 p.m.	
421 Neural Mechanisms of Nicotine Addiction II	Poster	HHH12–HHH36	SDCC Halls B–H	5 Mon	1–5 p.m.	
453 New Cortical and Subcortical Circuits for Food Reward	Nanosymposium		SDCC 2	6 Tue	8–10:15 a.m.	
502 Fear and Aversive Learning and Memory: Neural Circuitry I	Poster	XX5–YY6	SDCC Halls B–H	6 Tue	8 a.m.–noon	
503 Fear and Aversive Learning and Memory: Neural Circuitry II	Poster	YY7–ZZ5	SDCC Halls B–H	6 Tue	8 a.m.–noon	
504 Reward Neuropharmacology	Poster	ZZ6–ZZ17	SDCC Halls B–H	6 Tue	8 a.m.–noon	

GENERAL INFORMATION PROGRAM | List of Sessions by Theme and Day

SESSION # / SESSION TITLE	SESSION TYPE	POSTER BOARD #	LOCATION	DATE	TIME	CME HOURS
505 Post-Traumatic Stress Disorder: Human Studies	Poster	ZZ18–AAA3	SDCC Halls B–H	6 Tue	8 a.m.–noon	
506 Drugs of Abuse and Addiction: Memory and Relapse	Poster	AAA4–AAA25	SDCC Halls B–H	6 Tue	8 a.m.–noon	
534 Sex Differences and Hormone Action in the Limbic System	Minisymposium		SDCC 29D	6 Tue	1:30–4 p.m.	2.5
599 Appetitive and Incentive Learning and Memory II	Poster	DDD23–EEE16	SDCC Halls B–H	6 Tue	1–5 p.m.	
600 Subcortical Neurocircuitry in Motivated Behaviors	Poster	EEE17–FFF20	SDCC Halls B–H	6 Tue	1–5 p.m.	
601 Drugs of Abuse and Addiction: Alcohol: Neural Mechanisms II	Poster	FFF21–GGG21	SDCC Halls B–H	6 Tue	1–5 p.m.	
602 Cannabinoids: Neural Mechanisms	Poster	GGG22–HHH14	SDCC Halls B–H	6 Tue	1–5 p.m.	
603 Drugs of Abuse and Addiction: Cocaine Seeking and Reinstatement II	Poster	HHH15–HHH32	SDCC Halls B–H	6 Tue	1–5 p.m.	
623 Reward Processing by the Dorsal Raphe	Lecture		SDCC Ballroom 20	7 Wed	11:30 a.m.–12:40 p.m.	1.25
631 Depression and Bipolar Disorders: Neural Mechanisms	Nanosymposium		SDCC 5	7 Wed	8–10 a.m.	
632 Circuitry and Cell-Type Specific Neurophysiology of Addiction	Nanosymposium		SDCC 30B	7 Wed	8–11:15 a.m.	
681 Reward and Cell Signaling	Poster	WW14–XX12	SDCC Halls B–H	7 Wed	8 a.m.–noon	
682 Post-Traumatic Stress Disorder: Preclinical Models	Poster	XX13–ZZ4	SDCC Halls B–H	7 Wed	8 a.m.–noon	
683 Other Psychiatric Disorders	Poster	ZZ5–AAA5	SDCC Halls B–H	7 Wed	8 a.m.–noon	
684 Other Psychiatric Disorders II	Poster	AAA6–AAA20	SDCC Halls B–H	7 Wed	8 a.m.–noon	
685 Genetic Influences on Addiction	Poster	AAA21–BBB9	SDCC Halls B–H	7 Wed	8 a.m.–noon	
686 Drugs of Abuse and Addiction: Alcohol: Other Behavioral Effects	Poster	BBB10–CCC12	SDCC Halls B–H	7 Wed	8 a.m.–noon	
687 Drugs of Abuse and Addiction: Cocaine Reinforcement	Poster	CCC13–DDD13	SDCC Halls B–H	7 Wed	8 a.m.–noon	
721 Depression and Bipolar Disorders: Treatment and Drug Discovery	Nanosymposium		SDCC 24	7 Wed	1–3:15 p.m.	
722 Looking For Biological Interventions for Cocaine Use Disorder	Nanosymposium		SDCC 1	7 Wed	1–3:30 p.m.	
782 Subcortical Mechanisms in Motivated Behaviors and Physiological States	Poster	GGG1–GGG26	SDCC Halls B–H	7 Wed	1–5 p.m.	
783 Anxiety Disorders: Preclinical Models	Poster	GGG27–HHH29	SDCC Halls B–H	7 Wed	1–5 p.m.	
784 Drugs of Abuse and Addiction: Alcohol: Intake and Preference	Poster	HHH30–HHH58	SDCC Halls B–H	7 Wed	1–5 p.m.	
785 Opioids: Neural Mechanisms of Addiction	Poster	HHH59–III20	SDCC Halls B–H	7 Wed	1–5 p.m.	
Theme H: Cognition						
008 Neural Dynamics of the Primate Attention Network	Lecture		SDCC Ballroom 20	3 Sat	2–3:10 p.m.	1.25
019 Animal Cognition and Behavior: Learning and Memory: Neural Circuit Mechanisms	Nanosymposium		SDCC 30B	3 Sat	1–2:45 p.m.	
020 Human Cognition and Behavior: Timing and Temporal Processing	Nanosymposium		SDCC 7	3 Sat	1–3:30 p.m.	
081 Animal Cognition and Behavior: Executive Function: Network Activity	Poster	EEE6–EEE20	SDCC Halls B–H	3 Sat	1–5 p.m.	
082 Animal Cognition and Behavior: Learning and Memory: Hippocampal-Prefrontal Interactions	Poster	EEE21–FFF8	SDCC Halls B–H	3 Sat	1–5 p.m.	
083 Learning and Memory: Epigenetics	Poster	FFF9–GGG10	SDCC Halls B–H	3 Sat	1–5 p.m.	
084 Signal Pathways and Cognition	Poster	GGG11–GGG21	SDCC Halls B–H	3 Sat	1–5 p.m.	
085 Human Cognition and Behavior: Human Learning: Perceptual and Spatial Learning	Poster	GGG22–HHH23	SDCC Halls B–H	3 Sat	1–5 p.m.	
086 Human Cognition and Behavior: Human Long-Term Memory: Encoding, Retrieval, Reconsolidation	Poster	HHH24–HHH43	SDCC Halls B–H	3 Sat	1–5 p.m.	
087 Human Cognition and Behavior: Functional Mechanisms of Attention	Poster	HHH44–III12	SDCC Halls B–H	3 Sat	1–5 p.m.	
094 Specific Basal Forebrain-Cortical Cholinergic Circuits Coordinate Cognitive Operations	Symposium		SDCC 6B	4 Sun	8:30–11 a.m.	2.5
111 Decision Making: Circuits and Computations	Nanosymposium		SDCC 7	4 Sun	8–11 a.m.	
162 Animal Cognition and Behavior: Decision Making: Corticolimbic Circuits	Poster	BBB8–CCC13	SDCC Halls B–H	4 Sun	8 a.m.–noon	

GENERAL INFORMATION PROGRAM | List of Sessions by Theme and Day

SESSION # / SESSION TITLE	SESSION TYPE	POSTER BOARD #	LOCATION	DATE	TIME	CME HOURS
163 Animal Cognition and Behavior: Executive Function: Learning and Memory I	Poster	CCC14-EEE4	SDCC Halls B-H	4 Sun	8 a.m.-noon	
164 Animal Cognition and Behavior: Learning and Memory: Hippocampal Circuits I	Poster	EEE5-EEE22	SDCC Halls B-H	4 Sun	8 a.m.-noon	
165 Animal Cognition and Behavior: Learning and Memory: Hippocampal Circuits II	Poster	EEE23-FFF20	SDCC Halls B-H	4 Sun	8 a.m.-noon	
166 Animal Cognition and Behavior: Learning and Memory: Dentate Gyrus and Neurogenesis	Poster	FFF21-GGG12	SDCC Halls B-H	4 Sun	8 a.m.-noon	
167 Human Cognition and Behavior: Executive Function	Poster	GGG13-HHH3	SDCC Halls B-H	4 Sun	8 a.m.-noon	
168 Human Cognition and Behavior: Cognitive Development	Poster	HHH4-HHH24	SDCC Halls B-H	4 Sun	8 a.m.-noon	
169 Human Cognition and Behavior: Timing and Temporal Processing	Poster	HHH25-HHH54	SDCC Halls B-H	4 Sun	8 a.m.-noon	
178 High-Level Cognition in Low-Level Brain Regions	Minisymposium		SDCC 6C	4 Sun	1:30-4 p.m.	2.5
193 Human Cognition and Behavior: Decision Making and Cognitive Aging	Nanosymposium		SDCC 23	4 Sun	1-4:30 p.m.	
238 Mechanisms of Attention	Poster	ZZ2-AAA5	SDCC Halls B-H	4 Sun	1-5 p.m.	
239 Cortical and Hippocampal Circuits: Timing and Temporal Processing	Poster	AAA6-AAA21	SDCC Halls B-H	4 Sun	1-5 p.m.	
240 Animal Cognition and Behavior: Decision Making: Corticolimbic Circuits	Poster	AAA22-BBB12	SDCC Halls B-H	4 Sun	1-5 p.m.	
241 Animal Cognition and Behavior: Executive Function: Models of Disorders	Poster	BBB13-CCC9	SDCC Halls B-H	4 Sun	1-5 p.m.	
242 Animal Cognition and Behavior: Executive Function: Inhibitory Control	Poster	CCC10-DDD16	SDCC Halls B-H	4 Sun	1-5 p.m.	
243 Animal Cognition and Behavior: Working Memory	Poster	DDD17-EEE21	SDCC Halls B-H	4 Sun	1-5 p.m.	
244 Animal Cognition and Behavior: Learning and Memory: Physiology	Poster	EEE22-FFF14	SDCC Halls B-H	4 Sun	1-5 p.m.	
245 Aging: Anatomical, Physiological, and Cognitive Alterations	Poster	FFF15-GGG4	SDCC Halls B-H	4 Sun	1-5 p.m.	
246 Human Cognition and Behavior: Sensorimotor Processing	Poster	GGG5-GGG17	SDCC Halls B-H	4 Sun	1-5 p.m.	
247 Human Cognition and Behavior: Motor Learning and Memory	Poster	GGG18-HHH11	SDCC Halls B-H	4 Sun	1-5 p.m.	
248 Human Cognition and Behavior: Human Long-Term Memory: Retrieval I	Poster	HHH12-HHH35	SDCC Halls B-H	4 Sun	1-5 p.m.	
249 Human Cognition and Behavior: Human Long-Term Memory: Retrieval II	Poster	HHH36-HHH49	SDCC Halls B-H	4 Sun	1-5 p.m.	
250 Human Cognition and Behavior: Executive Function: Interference and Flexibility	Poster	HHH50-III3	SDCC Halls B-H	4 Sun	1-5 p.m.	
251 Human Cognition and Executive Function: Development	Poster	III4-III18	SDCC Halls B-H	4 Sun	1-5 p.m.	
252 Schizophrenia: Animal Models: Pharmacological	Poster	III19-III33	SDCC Halls B-H	4 Sun	1-5 p.m.	
265 New Computational Perspectives on Serotonin Function	Lecture		SDCC Ballroom 20	5 Mon	11:30 a.m.-12:40 p.m.	1.25
273 Animal Cognition and Behavior: Decision Making: Prefrontal Cortex I	Nanosymposium		SDCC 25	5 Mon	8-10:45 a.m.	
274 Human Cognition and Behavior: Spatial Learning and Navigation	Nanosymposium		SDCC 23	5 Mon	8-11:15 a.m.	
275 Human Cognition and Behavior: Working Memory I	Nanosymposium		SDCC 5	5 Mon	8-11:30 a.m.	
324 Mechanisms of Episodic and Episodic-Like Memory	Poster	CCC4-DDD13	SDCC Halls B-H	5 Mon	8 a.m.-noon	
325 Animal Cognition and Behavior: Decision Making: Orbitofrontal Cortex	Poster	DDD14-EEE2	SDCC Halls B-H	5 Mon	8 a.m.-noon	
326 Animal Cognition and Behavior: Executive Function: Learning and Memory II	Poster	EEE3-FFF3	SDCC Halls B-H	5 Mon	8 a.m.-noon	
327 Behavioral Aspects of Memory (Re)Consolidation	Poster	FFF4-FFF21	SDCC Halls B-H	5 Mon	8 a.m.-noon	
328 Molecular Mechanisms of Memory (Re)Consolidation	Poster	FFF22-GGG15	SDCC Halls B-H	5 Mon	8 a.m.-noon	
329 Animal Cognition and Behavior: Learning and Memory: Cortical-Hippocampal Interactions I	Poster	GGG16-HHH8	SDCC Halls B-H	5 Mon	8 a.m.-noon	
330 Animal Cognition and Behavior: Learning and Memory: Cortical-Hippocampal Interactions II	Poster	HHH9-HHH23	SDCC Halls B-H	5 Mon	8 a.m.-noon	
331 Animal Cognition and Behavior: Learning and Memory: Hippocampal Circuits III	Poster	HHH24-HHH52	SDCC Halls B-H	5 Mon	8 a.m.-noon	
332 Animal Cognition and Behavior: Learning and Memory: Gamma and Theta Rhythms	Poster	HHH53-III6	SDCC Halls B-H	5 Mon	8 a.m.-noon	
333 Decision Making I	Poster	III7-III36	SDCC Halls B-H	5 Mon	8 a.m.-noon	
334 Human Cognition and Behavior: Human Learning: Feedback, Reinforcement, and Reward	Poster	III37-III63	SDCC Halls B-H	5 Mon	8 a.m.-noon	

GENERAL INFORMATION PROGRAM | List of Sessions by Theme and Day

SESSION # / SESSION TITLE	SESSION TYPE	POSTER BOARD #	LOCATION	DATE	TIME	CME HOURS
335 Human Cognition and Behavior: Human Long-Term Memory: Encoding	Poster	III64–JJJ25	SDCC Halls B–H	5 Mon	8 a.m.–noon	
336 Schizophrenia: Behavior and Symptoms	Poster	JJJ26–JJJ35	SDCC Halls B–H	5 Mon	8 a.m.–noon	
337 Schizophrenia: Circuits and Systems	Poster	JJJ36–JJJ52	SDCC Halls B–H	5 Mon	8 a.m.–noon	
343 DUAL PERSPECTIVES: Gamma – Fumes or Fundamental	Dual Perspectives		SDCC 10	5 Mon	1–2 p.m.	
359 Animal Cognition and Behavior: Decision Making: Prefrontal Cortex II	Nanosymposium		SDCC 25	5 Mon	1–3:45 p.m.	
360 Animal Cognition and Behavior: Learning and Memory: Cortical-Hippocampal Interactions I	Nanosymposium		SDCC 31C	5 Mon	1–4 p.m.	
361 Human Cognition and Behavior: Human Long-Term Memory: Encoding and Retrieval	Nanosymposium		SDCC 32	5 Mon	1–4:15 p.m.	
362 Human Cognition and Behavior: Language and Communication	Nanosymposium		SDCC 23	5 Mon	1–4:30 p.m.	
363 Schizophrenia: Circuits and Systems	Nanosymposium		SDCC 2	5 Mon	1–3:45 p.m.	
422 Invertebrate Learning and Memory	Poster	HHH37–HHH58	SDCC Halls B–H	5 Mon	1–5 p.m.	
423 Hippocampal Circuits and Cognition	Poster	HHH59–III15	SDCC Halls B–H	5 Mon	1–5 p.m.	
424 Animal Cognition and Behavior: Learning and Memory: Hippocampal Circuits IV	Poster	III16–III42	SDCC Halls B–H	5 Mon	1–5 p.m.	
425 Learning and Memory: Molecular Mechanisms	Poster	III43–III67	SDCC Halls B–H	5 Mon	1–5 p.m.	
426 Human Cognition and Behavior: Working Memory	Poster	III68–JJJ23	SDCC Halls B–H	5 Mon	1–5 p.m.	
427 Decision Making II	Poster	JJJ24–JJJ53	SDCC Halls B–H	5 Mon	1–5 p.m.	
428 Human Cognition and Behavior: Decision Making and Reasoning: Value, Gains, and Losses	Poster	JJJ54–JJJ69	SDCC Halls B–H	5 Mon	1–5 p.m.	
429 Human Cognition and Behavior: Decision Making and Reasoning: Neural Mechanisms	Poster	JJJ70–LLL21	SDCC Halls B–H	5 Mon	1–5 p.m.	
436 The Neurobiology of Forgetting	Minisymposium		SDCC 6C	6 Tue	8:30–11 a.m.	2.5
454 Human Cognition and Behavior: Working Memory II	Nanosymposium		SDCC 5	6 Tue	8–10:45 a.m.	
507 Animal Cognition and Behavior: Decision Making: Prefrontal Cortex	Poster	AAA26–DDD1	SDCC Halls B–H	6 Tue	8 a.m.–noon	
508 Head Direction Cells and Spatial Navigation	Poster	DDD2–EEE7	SDCC Halls B–H	6 Tue	8 a.m.–noon	
509 Animal Cognition and Behavior: Learning and Memory: Neural Circuit Mechanisms I	Poster	EEE8–EEE26	SDCC Halls B–H	6 Tue	8 a.m.–noon	
510 Animal Cognition and Behavior: Learning and Memory: Neural Circuit Mechanisms II	Poster	FFF1–FFF14	SDCC Halls B–H	6 Tue	8 a.m.–noon	
511 Animal Cognition and Behavior: Learning and Memory: Neural Circuit Mechanisms III	Poster	FFF15–GGG3	SDCC Halls B–H	6 Tue	8 a.m.–noon	
512 Age-Related Cognitive Deficits and Treatments	Poster	GGG4–GGG22	SDCC Halls B–H	6 Tue	8 a.m.–noon	
513 Human Cognition and Behavior: Effects of Disorders and Addictive Drugs	Poster	GGG23–HHH25	SDCC Halls B–H	6 Tue	8 a.m.–noon	
514 Human Cognition and Behavior: Language Networks	Poster	HHH26–HHH55	SDCC Halls B–H	6 Tue	8 a.m.–noon	
515 Human Cognition and Behavior: Cognitive Aging I	Poster	HHH56–III15	SDCC Halls B–H	6 Tue	8 a.m.–noon	
516 Human Cognition and Behavior: Individual Differences	Poster	III16–III45	SDCC Halls B–H	6 Tue	8 a.m.–noon	
517 Schizophrenia: Animal Models: Developmental	Poster	III46–III64	SDCC Halls B–H	6 Tue	8 a.m.–noon	
531 Language Networks Derived From Direct Intracranial Recordings in Humans	Symposium		SDCC 6C	6 Tue	1:30–4 p.m.	2.5
545 Human Cognition and Behavior: Human Long-Term Memory Representations: Network and Circuit Mechanisms	Nanosymposium		SDCC 33	6 Tue	1–3:15 p.m.	
546 Human Cognition and Behavior: Working Memory III	Nanosymposium		SDCC 30B	6 Tue	1–3 p.m.	
547 Human Cognition and Behavior: Neurocognitive Development	Nanosymposium		SDCC 23	6 Tue	1–4:30 p.m.	
604 Place Cells	Poster	HHH33–III1	SDCC Halls B–H	6 Tue	1–5 p.m.	
605 Animal Cognition and Behavior: Associative, Nonassociative, and Skill Learning	Poster	III2–III25	SDCC Halls B–H	6 Tue	1–5 p.m.	
606 Human Cognition and Behavior: Working Memory II	Poster	III26–III51	SDCC Halls B–H	6 Tue	1–5 p.m.	
607 Human Cognition and Behavior: Cognitive Aging II	Poster	III52–JJJ13	SDCC Halls B–H	6 Tue	1–5 p.m.	

GENERAL INFORMATION PROGRAM | List of Sessions by Theme and Day

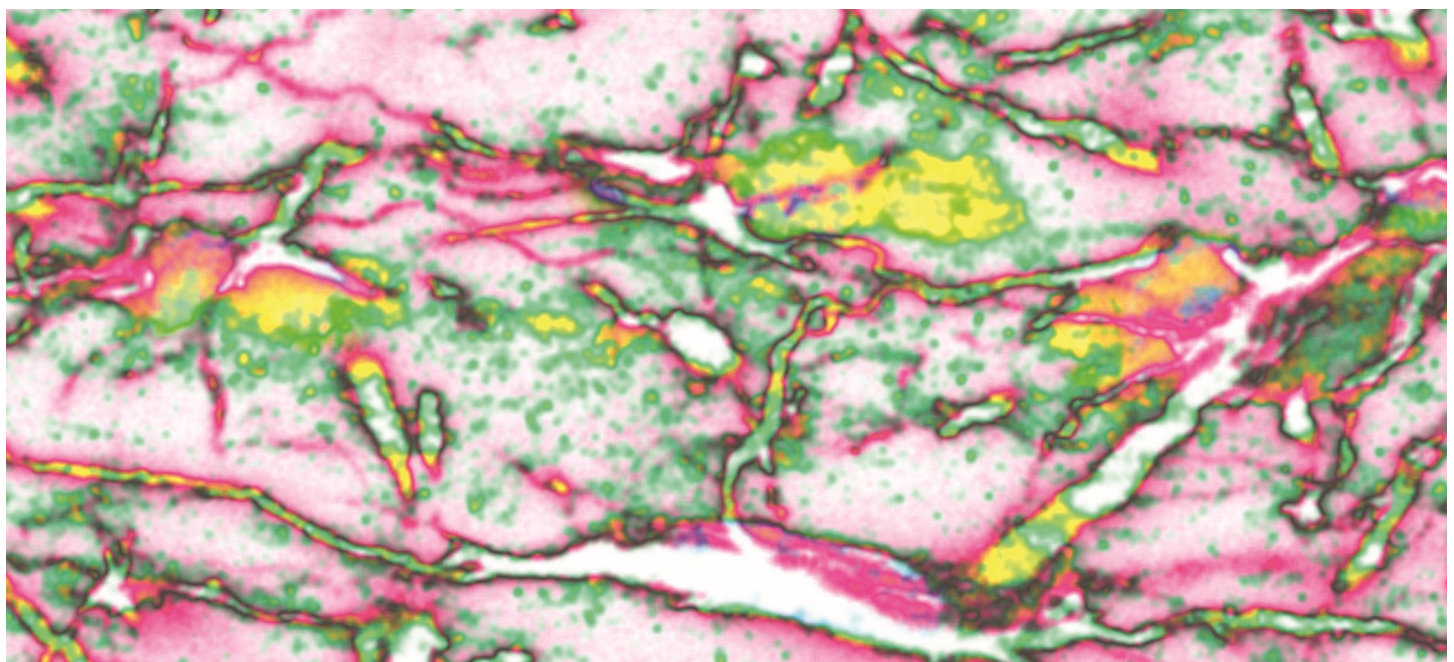
SESSION # / SESSION TITLE	SESSION TYPE	POSTER BOARD #	LOCATION	DATE	TIME	CME HOURS
608 Human Cognition and Behavior: Cognitive Aging III	Poster	JJJ14–JJJ38	SDCC Halls B–H	6 Tue	1–5 p.m.	
609 Schizophrenia: Genetic, Cellular, and Molecular Features	Poster	JJJ39–JJJ67	SDCC Halls B–H	6 Tue	1–5 p.m.	
616 Mental Structures and Sequences: Evolutionary Solutions From Birds to Primates	Symposium		SDCC 6B	7 Wed	8:30–11 a.m.	2.5
633 Animal Cognition and Behavior: Learning and Memory: Cortical-Hippocampal Interactions II	Nanosymposium		SDCC 1	7 Wed	8–11:30 a.m.	
634 Human Cognition and Behavior: Human Learning: Feedback, Reinforcement, and Reward	Nanosymposium		SDCC 4	7 Wed	8–11:15 a.m.	
688 Animal Cognition and Behavior: Decision Making: Prefrontal Cortex	Poster	DDD14–EEE17	SDCC Halls B–H	7 Wed	8 a.m.–noon	
689 Spatial Navigation: Entorhinal Cortex	Poster	EEE18–FFF15	SDCC Halls B–H	7 Wed	8 a.m.–noon	
690 Animal Cognition and Behavior: Social Memory and Cognition I	Poster	FFF16–GGG16	SDCC Halls B–H	7 Wed	8 a.m.–noon	
691 Animal Cognition and Behavior: Social Memory and Cognition II	Poster	GGG17–HHH5	SDCC Halls B–H	7 Wed	8 a.m.–noon	
692 Learning and Memory: Pharmacology	Poster	HHH6–HHH34	SDCC Halls B–H	7 Wed	8 a.m.–noon	
693 Human Cognition and Behavior: Human Long-Term Memory: Medial Temporal Lobe I	Poster	HHH35–III1	SDCC Halls B–H	7 Wed	8 a.m.–noon	
694 Human Cognition and Behavior: Human Long-Term Memory: Medial Temporal Lobe II	Poster	III2–III26	SDCC Halls B–H	7 Wed	8 a.m.–noon	
695 Human Cognition and Behavior: Language	Poster	III27–III55	SDCC Halls B–H	7 Wed	8 a.m.–noon	
696 Human Cognition and Behavior: Language Developmental Processes	Poster	III56–JJJ1	SDCC Halls B–H	7 Wed	8 a.m.–noon	
697 Human Cognition and Behavior: Decision Making and Reasoning: Physiology and Basic Mechanisms	Poster	JJJ2–JJJ31	SDCC Halls B–H	7 Wed	8 a.m.–noon	
707 From Recent to Remote Memory and Back	Minisymposium		SDCC 6C	7 Wed	1:30–4 p.m.	2.5
786 Cortical and Hippocampal Circuit Interactions	Poster	III21–III34	SDCC Halls B–H	7 Wed	1–5 p.m.	
787 Animal Cognition and Behavior: Cortical and Striatal Circuits	Poster	III35–III55	SDCC Halls B–H	7 Wed	1–5 p.m.	
788 Human Cognition and Behavior: Perception and Imagery I	Poster	III56–JJJ10	SDCC Halls B–H	7 Wed	1–5 p.m.	
789 Human Cognition and Behavior: Perception and Imagery II	Poster	JJJ11–JJJ31	SDCC Halls B–H	7 Wed	1–5 p.m.	
790 Human Cognition and Behavior: Perception and Imagery III	Poster	JJJ32–JJJ51	SDCC Halls B–H	7 Wed	1–5 p.m.	
791 Human Cognition and Behavior: Human Long-Term Memory: Medial Temporal Lobe III	Poster	JJJ52–JJJ66	SDCC Halls B–H	7 Wed	1–5 p.m.	
792 Human Cognition and Behavior: Attentional Networks I	Poster	JJJ67–LLL25	SDCC Halls B–H	7 Wed	1–5 p.m.	
793 Human Cognition and Behavior: Attentional Networks II	Poster	LLL26–LLL35	SDCC Halls B–H	7 Wed	1–5 p.m.	
794 Human Cognition and Behavior: Social Cognition: Neural Processes and Disorders I	Poster	LLL36–LLL58	SDCC Halls B–H	7 Wed	1–5 p.m.	
795 Human Cognition and Behavior: Social Cognition: Neural Processes and Disorders II	Poster	LLL59–MMM15	SDCC Halls B–H	7 Wed	1–5 p.m.	
Theme I: Techniques						
003 New Observations in Neuroscience Using Superresolution Microscopy	Minisymposium		SDCC 6B	3 Sat	1:30–4 p.m.	2.5
088 Molecular, Biochemical, and Genetic Techniques: Molecular Techniques I	Poster	III13–III28	SDCC Halls B–H	3 Sat	1–5 p.m.	
089 Computation, Modeling, and Simulation: Cellular Models	Poster	III29–III42	SDCC Halls B–H	3 Sat	1–5 p.m.	
090 Data Analysis and Statistics: Human Data: EEG, Electrophysiology, and DBS	Poster	III43–III67	SDCC Halls B–H	3 Sat	1–5 p.m.	
091 Data Analysis and Statistics: Human Data: Vision, Audition, Movement, and Posture	Poster	III68–JJJ59	SDCC Halls B–H	3 Sat	1–5 p.m.	
100 Neural Data Science: Accelerating the Experiment-Analysis-Theory Cycle in Large-Scale Neuroscience	Lecture		SDCC Ballroom 20	4 Sun	10–11:10 a.m.	1.25
112 Physiological Methods: Optical Methodology	Nanosymposium		SDCC 30B	4 Sun	8–11 a.m.	
170 Anatomical Methods: Staining, Tracing, and Imaging Techniques: Sample Preparation	Poster	HHH55–III14	SDCC Halls B–H	4 Sun	8 a.m.–noon	
171 Anatomical Methods: Staining, Tracing, and Imaging Techniques: Circuit Tracing	Poster	III15–III38	SDCC Halls B–H	4 Sun	8 a.m.–noon	
172 Physiological Methods: Optogenetics I	Poster	III39–III58	SDCC Halls B–H	4 Sun	8 a.m.–noon	
173 Physiological Methods: Electrophysiology: Neural Networks	Poster	III59–JJJ4	SDCC Halls B–H	4 Sun	8 a.m.–noon	

GENERAL INFORMATION PROGRAM | List of Sessions by Theme and Day

SESSION # / SESSION TITLE	SESSION TYPE	POSTER BOARD #	LOCATION	DATE	TIME	CME HOURS
174 Physiological Methods: Electrophysiology: Stimulating Neurons	Poster	JJJ5–GGG19	SDCC Halls B–H	4 Sun	8 a.m.–noon	
176 Local Field Potentials and Deep Brain Stimulation	Symposium		SDCC 6A	4 Sun	1:30–4 p.m.	2.5
194 Biomarker and Drug Discovery: Drug Delivery and Assay Development	Nanosymposium		SDCC 4	4 Sun	1–3 p.m.	
253 Molecular, Biochemical, and Genetic Techniques: Biochemical Techniques	Poster	III34–III47	SDCC Halls B–H	4 Sun	1–5 p.m.	
254 Software Tools Connectivity Analysis Macro/Micro Structure	Poster	III48–III65	SDCC Halls B–H	4 Sun	1–5 p.m.	
255 Physiological Methods: Optogenetics II	Poster	III66–JJJ17	SDCC Halls B–H	4 Sun	1–5 p.m.	
256 Organelle Structure and Dynamics: What High-Resolution Imaging Is Uncovering	Lecture		SDCC Ballroom 20	5 Mon	8:30–9:40 a.m.	1.25
262 Exposing Neural Dynamics Using Real-Time Control: From Neurons to Human Behavior and Psychopathology	Minisymposium		SDCC 29D	5 Mon	8:30–11 a.m.	2.5
276 The Mouse Brain: Circuitry and Mapping in 3D	Nanosymposium		SDCC 30B	5 Mon	8–11:15 a.m.	
338 Physiological Methods: Optical Methodology: Development I	Poster	JJJ53–LLL10	SDCC Halls B–H	5 Mon	8 a.m.–noon	
339 Computation, Modeling, and Simulation: Network Models: Theory I	Poster	LLL11–LLL28	SDCC Halls B–H	5 Mon	8 a.m.–noon	
340 Computation, Modeling, and Simulation: Human Network Models	Poster	LLL29–LLL50	SDCC Halls B–H	5 Mon	8 a.m.–noon	
341 Data Analysis and Statistics: Human Data: Neuroimaging	Poster	LLL51–MMM48	SDCC Halls B–H	5 Mon	8 a.m.–noon	
348 Innovative Approaches for Monitoring Neuromodulation With Light	Minisymposium		SDCC 28A	5 Mon	1:30–4 p.m.	2.5
364 The Marmoset Brain: Brain Mapping and Circuit Tracing	Nanosymposium		SDCC 1	5 Mon	1–4:15 p.m.	
430 Anatomical Methods: Staining, Tracing, and Imaging Techniques: Electron Microscopy and Novel Probes	Poster	LLL22–LLL35	SDCC Halls B–H	5 Mon	1–5 p.m.	
431 Physiological Methods: Electrophysiology: Electrode Arrays I	Poster	LLL36–MMM3	SDCC Halls B–H	5 Mon	1–5 p.m.	
432 Biomarker and Drug Discovery: Drug Delivery and Neurodegenerative Diseases (AD, PD, MS, Stroke)	Poster	MMM4–MMM26	SDCC Halls B–H	5 Mon	1–5 p.m.	
439 Whole-Brain Analysis of Cells and Circuits by Tissue Clearing and Light-Sheet Microscopy	Minisymposium		SDCC 29D	6 Tue	8:30–11 a.m.	2.5
518 Tools and Techniques for Manipulation of Neurons and Circuits	Poster	III65–JJJ20	SDCC Halls B–H	6 Tue	8 a.m.–noon	
519 Systems Biology and Bioinformatics: Genomics, Proteomics, and Systems Biology	Poster	JJJ20–JJJ44	SDCC Halls B–H	6 Tue	8 a.m.–noon	
520 New Behavioral, <i>In vivo</i> , and <i>In vitro</i> Physiological Methods	Poster	JJJ45–JJJ66	SDCC Halls B–H	6 Tue	8 a.m.–noon	
521 Computation, Modeling, and Simulation: Network Models: Experimentation	Poster	JJJ67–LLL8	SDCC Halls B–H	6 Tue	8 a.m.–noon	
522 Computation, Modeling, and Simulation: Computational Tools: Neuroimaging	Poster	LLL9–LLL18	SDCC Halls B–H	6 Tue	8 a.m.–noon	
523 Computation, Modeling, and Simulation: EEG, Evoked Potential, and Electrophysiology	Poster	LLL19–LLL38	SDCC Halls B–H	6 Tue	8 a.m.–noon	
524 Computation, Modeling, and Simulation: Informatics and Database	Poster	LLL39–LLL51	SDCC Halls B–H	6 Tue	8 a.m.–noon	
525 Computation, Modeling, and Simulation: Neuron/Network Modeling	Poster	LLL52–MMM9	SDCC Halls B–H	6 Tue	8 a.m.–noon	
530 The Dynamic Brain: Signatures of Fast Functional Reconfiguration, Their Interpretability, and Clinical Value	Symposium		SDCC 6B	6 Tue	1:30–4 p.m.	2.5
548 Physiological Methods: Electrophysiology: Stimulating Neurons and Electrode Arrays	Nanosymposium		SDCC 30E	6 Tue	1–3:30 p.m.	
549 Computation, Modeling, and Simulation: Network Models: Theory and Experimentation	Nanosymposium		SDCC 2	6 Tue	1–3:15 p.m.	
610 Molecular, Biochemical, and Genetic Techniques: Molecular Techniques II	Poster	JJJ68–LLL27	SDCC Halls B–H	6 Tue	1–5 p.m.	
611 Anatomical Methods: Staining, Tracing, and Imaging Techniques	Poster	LLL28–LLL51	SDCC Halls B–H	6 Tue	1–5 p.m.	
612 Physiological Methods: Optical Methodology: Development II	Poster	LLL52–MMM16	SDCC Halls B–H	6 Tue	1–5 p.m.	
613 Neuronal Networks Widescale, Multimodal, and Electrophysiological	Poster	MMM17–MMM32	SDCC Halls B–H	6 Tue	1–5 p.m.	
617 Human Stem Cell Models to Validate Rare and Common Variants Contributing to Neurodevelopmental Disorders	Minisymposium		SDCC 6C	7 Wed	8:30–11 a.m.	2.5

GENERAL INFORMATION PROGRAM | List of Sessions by Theme and Day

SESSION # / SESSION TITLE	SESSION TYPE	POSTER BOARD #	LOCATION	DATE	TIME	CME HOURS
635 Advances in Molecular, Genetic, and Imaging Techniques	Nanosymposium		SDCC 2	7 Wed	8–10 a.m.	
698 Systems Biology and Bioinformatics: Bioinformatics	Poster	JJJ32–JJJ47	SDCC Halls B–H	7 Wed	8 a.m.–noon	
699 Physiological Methods: Optical Methodology: Probes	Poster	JJJ48–LLL3	SDCC Halls B–H	7 Wed	8 a.m.–noon	
700 Physiological Methods: Electrophysiology: Electrode Arrays II	Poster	LLL4–LLL32	SDCC Halls B–H	7 Wed	8 a.m.–noon	
701 Biomarker and Drug Discovery: Affective Disorders and Schizophrenia	Poster	LLL33–LLL50	SDCC Halls B–H	7 Wed	8 a.m.–noon	
702 Computation, Modeling, and Simulation: Network Models: Theory II	Poster	LLL51–MMM4	SDCC Halls B–H	7 Wed	8 a.m.–noon	
703 Neuronal Network Models Applied to Neuroscience	Poster	MMM5–MMM29	SDCC Halls B–H	7 Wed	8 a.m.–noon	
723 Molecular, Biochemical, and Genetic Techniques: Molecular Techniques	Nanosymposium		SDCC 25	7 Wed	1–2:45 p.m.	
796 Physiological Methods: Optical Methodology: Application	Poster	MMM16–MMM39	SDCC Halls B–H	7 Wed	1–5 p.m.	
Theme J: History and Education						
021 History of Neuroscience	Theme J Poster	JJJ34–JJJ46	SDCC Halls B–H	3 Sat	1–5 p.m.	
022 Teaching of Neuroscience: K-12	Theme J Poster	JJJ47–JJJ60	SDCC Halls B–H	3 Sat	1–5 p.m.	
023 Teaching of Neuroscience: College I	Theme J Poster	JJJ61–LLL14	SDCC Halls B–H	3 Sat	1–5 p.m.	
024 Teaching of Neuroscience: College II	Theme J Poster	LLL15–LLL41	SDCC Halls B–H	4 Sun	8 a.m.–noon	
025 Teaching of Neuroscience: Graduate and Professional	Theme J Poster	LLL42–LLL53	SDCC Halls B–H	3 Sat	1–5 p.m.	
026 Public Awareness of Neuroscience: Outreach Activities I	Theme J Poster	LLL54–MMM13	SDCC Halls B–H	4 Sun	8 a.m.–noon	
027 Public Awareness of Neuroscience: Outreach Activities II	Theme J Poster	MMM14–MMM26	SDCC Halls B–H	4 Sun	8 a.m.–noon	
028 Ethical and Policy Issues in Neuroscience	Theme J Poster	MMM27–MMM39	SDCC Halls B–H	4 Sun	8 a.m.–noon	
179 Telling Stories of Science	Minisymposium		SDCC 6E	4 Sun	1:30–4 p.m.	



GENERAL INFORMATION PROGRAM | List of Sessions by Theme and Day

SESSION # / SESSION TITLE	SESSION TYPE	LOCATION	DATE	TIME
SfN Preconference Sessions				
SPC01	NEUROBIOLOGY OF DISEASE WORKSHOP: The Role of Innate Immunity in CNS Disorders Throughout the Lifespan	SfN Preconference Session	SDCC 6A	2 Fri 8 a.m.–5 p.m.
SPC02	SHORT COURSE 1: Sex Differences in the Brain: Balancing Sex in Preclinical Research	SfN Preconference Session	SDCC 6B	2 Fri 8 a.m.–6 p.m.
SPC03	SHORT COURSE 2: Functional, Structural, and Molecular Imaging, and Big Data Analysis	SfN Preconference Session	SDCC 6C	2 Fri 8 a.m.–6 p.m.
SPC04	SHORT COURSE 3: Recognizing and Addressing Power Dynamics in Academia	SfN Preconference Session	SDCC 11	2 Fri 1–5:30 p.m.
SPC05	Meet-the-Expert, Session 1: Carlos Aizenman - From Synapses to Behavior: Uncovering Fundamental Concepts Guiding the Development and Plasticity of Neural Circuits	SfN Preconference Session	Hilton Bayfront: Sapphire 410	3 Sat 8–9:15 a.m.
SPC06	Meet-the-Expert, Session 1: Hynek Wichterle - Modeling Spinal Cord Development and Disease With Stem Cell-Derived Neurons	SfN Preconference Session	Hilton Bayfront: Sapphire Ballroom I	3 Sat 8–9:15 a.m.
SPC07	Meet-the-Expert, Session 1: Camilla Bellone - My Personal Journey From Synapse to Circuit and Behavior	SfN Preconference Session	Hilton Bayfront: Sapphire 400	3 Sat 8–9:15 a.m.
SPC08	Meet-the-Expert, Session 1: Monica Perez - Neurophysiology Guiding Recovery After CNS Injury	SfN Preconference Session	Hilton Bayfront: Sapphire Ballroom M	3 Sat 8–9:15 a.m.
SPC09	Meet-the-Expert, Session 1: Lisa Stowers - From Behavior to Mechanism: The Features and Flaws of Studying Innate and Social Behavior in the Mouse	SfN Preconference Session	Hilton Bayfront: Sapphire Ballroom E	3 Sat 8–9:15 a.m.
SPC10	Meet-the-Expert, Session 1: Timothy Harris - High Channel Count Electrophysiology, Neuropixels, and Beyond: Where Can Technology Take Us?	SfN Preconference Session	Hilton Bayfront: Sapphire Ballroom A	3 Sat 8–9:15 a.m.
SPC11	Meet-the-Clinician-Expert, Session 1: Y. Joyce Liao - How to Make Your Work/Life Relevant	SfN Preconference Session	Hilton Bayfront: Sapphire Ballroom B	3 Sat 8–9:15 a.m.
SPC12	Meet-the-Expert, Session 2: Linda Overstreet-Wadiche - Understanding the Physiology of New and Old Neurons in the Dentate Gyrus	SfN Preconference Session	Hilton Bayfront: Sapphire 400	3 Sat 9:30–10:45 a.m.
SPC13	Meet-the-Expert, Session 2: Chenghua Gu - Molecular Mechanisms Governing the Blood Brain Barrier Function	SfN Preconference Session	Hilton Bayfront: Sapphire Ballroom I	3 Sat 9:30–10:45 a.m.
SPC14	Meet-the-Expert, Session 2: Piali Sengupta - Start Making Sense: Neuronal and Molecular Mechanisms of Sensory Signaling	SfN Preconference Session	Hilton Bayfront: Sapphire Ballroom E	3 Sat 9:30–10:45 a.m.
SPC15	Meet-the-Clinician-Expert, Session 2: Christian Luscher - A Circuit Model for Addiction: Construction and Translation	SfN Preconference Session	Hilton Bayfront: Sapphire 410	3 Sat 9:30–10:45 a.m.
SPC16	Meet-the-Expert, Session 2: Tomomi Shimogori - Early Life Experience Shapes Brain Development: To Understand Primate Brains From Rodent Works	SfN Preconference Session	Hilton Bayfront: Sapphire Ballroom B	3 Sat 9:30–10:45 a.m.
SPC17	Meet-the-Expert, Session 2: Anne Churchland - Decision-Making in the Brain, the Lab, and Beyond	SfN Preconference Session	Hilton Bayfront: Sapphire Ballroom A	3 Sat 9:30–10:45 a.m.
SPC18	Meet-the-Expert, Session 2: Michael Lin - The Need for Speed: Development and Use of Genetically Encoded Voltage Indicators	SfN Preconference Session	Hilton Bayfront: Sapphire Ballroom M	3 Sat 9:30–10:45 a.m.
Professional Development Workshops				
PDW01	Building a Supportive Global Network	Professional Development Workshop	SDCC 30E	3 Sat 9–11 a.m.
PDW02	Improving Your Science: Better Inference, Reproducible Analyses, and the New Publication Landscape	Professional Development Workshop	SDCC 31C	3 Sat 9–11 a.m.
PDW03	Careers in Making Medicines: Translating Basic Research Into Therapeutics	Professional Development Workshop	SDCC 31C	3 Sat 12–2 p.m.
PDW04	How SfN Helped My Career: Expanding Your Neural Network at the Annual Meeting	Professional Development Workshop	SDCC 30E	3 Sat 12–2 p.m.
PDW05	How to Thrive as a Woman in Neuroscience	Professional Development Workshop	SDCC 31C	3 Sat 3–5 p.m.
PDW06	Bringing a Student-Run Outreach Program to Your Institution	Professional Development Workshop	SDCC 11	4 Sun 9–11 a.m.

GENERAL INFORMATION PROGRAM | List of Sessions by Theme and Day

SESSION # / SESSION TITLE	SESSION TYPE	LOCATION	DATE	TIME
PDW07 Face-to-Face Networking: Building and Maintaining Professional Relationships	Professional Development Workshop	SDCC 30E	4 Sun	9–11 a.m.
PDW08 Fixing the Leaky Pipeline for Women in Science: Addressing Issues Facing New Moms	Professional Development Workshop	SDCC 31C	4 Sun	9–11 a.m.
PDW09 Career Planning and Explorations for Biomedical PhD Scientists and Physician-Scientists (MD/PhD)	Professional Development Workshop	SDCC 31C	4 Sun	12–2 p.m.
PDW10 Cultivating Leadership in Multidisciplinary Research: Bridging Gaps Across Campuses, Countries, and Continents	Professional Development Workshop	SDCC 30E	4 Sun	12–2 p.m.
PDW11 Neuroscience Departments and Programs Workshop: Breaking Through: Pathways to Independence for Early Career Neuroscientists	Professional Development Workshop	SDCC 30E	4 Sun	2:30–5 p.m.
PDW12 How a Journal Handles Your Paper	Professional Development Workshop	SDCC 31C	4 Sun	3–5 p.m.
PDW13 FAIR Neuroscience: Sharing and Collaborating for Reproducible Neuroscience	Professional Development Workshop	SDCC 31C	5 Mon	9–11 a.m.
PDW14 Teaching Neuroscience: Emotion and Learning	Professional Development Workshop	SDCC 30E	5 Mon	9–11 a.m.
Meetings and Events				
ME01 NeuroJobs Career Center	Meetings and Events	SDCC Sails Pavilion	3 Sat	8 a.m.–5 p.m.
ME02 Meeting Mobile App Tutorial	Meetings and Events	SDCC 11	3 Sat	10–11 a.m.
ME03 Graduate School Fair	Meetings and Events	SDCC Sails Pavilion	3 Sat	1–3 p.m.
ME04 BRAIN AWARENESS CAMPAIGN EVENT: Action and Potential in Outreach, Education, and Research	Meetings and Events	SDCC 16	3 Sat	2:30–4 p.m.
ME05 Diversity Poster Session	Meetings and Events	SDCC Hall A	3 Sat	6:30–8:30 p.m.
ME06 International Fellows Poster Session	Meetings and Events	SDCC Hall A	3 Sat	6:30–8:30 p.m.
ME07 Trainee Professional Development Awards Poster Session	Meetings and Events	SDCC Hall A	3 Sat	6:30–8:30 p.m.
ME08 Career Development Topics: A Networking Event	Meetings and Events	SDCC Hall A	3 Sat	7:30–9:30 p.m.
ME09 NeuroJobs Career Center	Meetings and Events	SDCC Sails Pavilion	4 Sun	8 a.m.–5 p.m.
ME10 Graduate School Fair	Meetings and Events	SDCC Sails Pavilion	4 Sun	12–2 p.m.
ME11 SOCIAL ISSUES ROUNDTABLE: Solitary Confinement: Psychological and Neurobiological Insights Into Isolation	Meetings and Events	SDCC 10	4 Sun	1–3 p.m.
ME12 NeuroJobs Career Center	Meetings and Events	SDCC Sails Pavilion	5 Mon	8 a.m.–5 p.m.
ME13 NeuroJobs Career Center Workshop: Best Practices for Filling Your Open Position With the Perfect Candidate	Meetings and Events	SDCC 11	5 Mon	10–10:30 a.m.
ME14 ANIMALS IN RESEARCH PANEL: Gaining Public Support for Animal Research: A Proposal for Openness	Meetings and Events	SDCC 11	5 Mon	12–2 p.m.
ME15 Graduate School Fair	Meetings and Events	SDCC Sails Pavilion	5 Mon	12–2 p.m.
ME16 SfN CHAPTERS WORKSHOP AND RECEPTION	Meetings and Events	Marriott Marquis: San Diego Ballroom A	5 Mon	6:45–8:45 p.m.
ME17 NeuroJobs Career Center	Meetings and Events	SDCC Sails Pavilion	6 Tue	8 a.m.–5 p.m.
ME18 Celebration of Women in Neuroscience Luncheon	Meetings and Events	Hilton Bayfront: Sapphire Ballroom CD	6 Tue	12–2 p.m.
ME19 Graduate School Fair	Meetings and Events	SDCC Sails Pavilion	6 Tue	12–2 p.m.
ME20 PUBLIC ADVOCACY FORUM: Advocacy in Four Dimensions	Meetings and Events	SDCC 10	6 Tue	2–3:30 p.m.
ME21 SfN Members' Business Meeting	Meetings and Events	SDCC 3	6 Tue	6:45–7:30 p.m.
ME22 Graduate Student Reception	Meetings and Events	Hilton Bayfront: Sapphire Ballroom CD	6 Tue	8:30–11:30 p.m.
ME23 NeuroJobs Career Center	Meetings and Events	SDCC Sails Pavilion	7 Wed	8 a.m.–3 p.m.